







William Forbes Raymond E. Bogue Arthur G. Holmes

They Help Plan Shrine Fields

Three past presidents of dates and Shriners at the high Omar Shrine Club are chairmen of the Shrine Shrine Club...

Chamber Names PR Committee

A Chamber of Commerce public relations committee headed by Arthur H. Dauer has been appointed by John A. DeQuattro, president of the Manchester Chamber.

South African Blacks Have Passport Troubles

By KENNETH L. WRITING anybody who isn't white. The clearance form describes the applicant's work...

New Books At Library

Brown—11 Harrowhouse Butterworth—The black look of Denmark...

A & M DISCOUNT STORES 881 MAIN STREET Downtown Manchester MONEY REFUNDED WITHIN 25 DAYS... SUPER SAVINGS Where LOW LOW PRICES! Cigarettes 48¢ & 50¢ PRICES SLASHED

HERE ARE JUST A FEW OF THE HUNDREDS OF ITEMS AT OUR EVERYDAY LOW PRICES! LISTERINE 20-oz. 77¢ ANACIN TABLETS 100s 1.05 DI-GEL LIQUID 6-oz. 75¢ EFFERDENT 60 Tabs 1.59 HEAD & SHOULDERS 2.7-oz. Tube 1.15 SECRET SPRAY 7-oz. Family 1.59 ALKA SELTZER 25 Tablets 75¢ ONE-A-DAY VITAMINS 100 Tab. 2.98 LYSOL SPRAY 14-oz. 1.89 BAYER'S FOR CHILDREN 30 Tabs. 48¢ JOHNSON BABY POWDER 24-oz. 1.95 GILLETTE Super Stainless BLADES 15s 2.19 CLAIROL NICE & EASY All Shades 2.25 MISS CLAIROL HAIR COLOR BATH 1.75 VASELINE INTENSIVE CARE 10-oz. 1.19 FASTEETH POWDER 4.5-oz. 1.39 ARRID EXTRA DRY SPRAY 9-oz. 1.79 STYLE HAIR SPRAY 16-oz. 1.50 JERGENS LOTION 10-oz. 1.19 COLGATE TOOTHPASTE 6.75-oz. 1.09 MAALOX LIQUID 12-oz. 1.69 VICK'S FORMULA 44 8.5-oz. 2.59 BEN GAY Reg. or Greaseless 3-oz. 1.98 CONTAC CAPSULES 10s 1.69

Woolite LIQUID COLD WATER WASH 16-oz. 89¢ KODAK INSTANT FILM 13 Color 12 1/2 88¢ EASY-OFF Window Cleaner 16-oz. 39¢ Palmolive Gold Deodorant Soap Bath Size 5-oz. 15¢ GLADE AIR-FRESHNER 7-oz. - 6 Fragrances REG. 39¢

just received new shipment of metal and plastic window boxes sizes 18" - 24" - 30" - 36" priced 97¢ to \$2.44

GREAT BUYS ON WATCHES! 29.88 VALUES UP TO \$65.00 TREASURE SHOPPE Water Resistant - Shock Resistant - Anti Magnetic Day-Date - Calendar - Divers

Columbia Lilacs Create Atmosphere For Yearbook Presentation

Porter School eighth graders of Collins Rd. and Curtis Beck, lumbia entering kindergarten are welcome on the bus ride.



Tech Students Receive Awards Wilson M. Simon, Youth Activities Committee chairman of the Manchester Rotary Club, holds an electric drill, one of the tools presented by the service organization to top students in Cheney Tech trade areas.

A COLONIAL 3 ROOM HOMEFUL AT TREMENDOUS GROUP PRICE SAVINGS! A Beautifully Coordinated Total 3 Rooms of Beautiful EARLY AMERICAN FURNITURE! \$888 ALL 19 PIECES ONLY

About Town Douglas Stanley Speth, son of Mr. and Mrs. Charles E. Speth of 26 Marion Dr., recently graduated from the New Hampton School, New Hampton, N.Y.

Morgan's Ltd. Men's Clothing and Furnishings 985 MAIN STREET Downtown Manchester 643-7954 The button down, 1 1/2 inches later. The Gant Evolution.

D&L FIVE STORES OF FASHION The beautiful halter dress in a striking border print. Antron nylon in black/white, red/white. By DI GL 5 to 18 \$26 Smashing white polyester knit with bodice and skirt contrasted in a turquoise/pink print. By Mr. Jay. 10-18. \$26

blau furniture stores CASH CHARGE BUDGET TERMS UP TO 3 YEARS TO PAY OPEN MON, THURS. & FRI. NITES & for your shopping convenience!

Manchester Evening Herald... PUBLISHED BY THE MANCHESTER EVENING HERALD CO. 1000 Main Street, Manchester, Conn. 06103

role few of either his supporters or enemies would have considered likely or possible for him. We hope for results which are not limited by the realities which closed in on everybody at Moscow, but which are as open as the dream which led Richard Nixon there.

No Pandas?

In distinct contrast to most conceptions of pandas for the United States, a fatigues of what you get for someone who has everything seems to have overtaken the gift side of the Moscow mission.

Nevertheless, the President and Mrs. Nixon managed to do fairly well. They presented, to the people of Russia, a porcelain chess set designed and created by a New Jersey artist named Harry Burger Jr. For the Russian leaders, Brezhnev, Kopylov, and Podgorny, they took specially designed cloaks. For gifts to the staff side, the Americans took porcelain birds and flowers, and the hosts in Leningrad there was a large color lithograph showing Washington in the late 18th century.

Nothing exciting, one might say, but adequate. Finally, just before the left Moscow, President Nixon presented to Brezhnev a Cadillac car, nothing extraordinary, just a regular production model as it came off the line. This gift, we are sure, was not made for originality.

What is totally missing, we now begin to realize, is some evidence that the Russians, for their part, even bothered to go shopping. They gave presents, somebody apparently, but they were not noteworthy. So far as we have read or heard, they just passed the whole thing up, and accepted the American gifts with one of those embarrassed awkward thanks which can only be translated as "we couldn't think of anything at all to give you, so we didn't."

Beyond such credits, one also has to give these high conferees good marks for recognizing, and for at least trying to exercise, by their own words, the dangerous false premises involved in their own bilateral conduct.

While our eyes are great and powerful nations' President Nixon took pains to say in his extraordinarily fine address to the Russian people, "the world is no longer dominated by two superpowers. The world is a better and safer place because its power and resources are more widely distributed."

And when the two superpowers, nevertheless still meeting as superpowers, came to putting down on paper their joint declaration of principles, they included, as the clearest article of their declaration, the following: "The U.S.A. and the U.S.S.R. make no claim for themselves and would not recognize the claims of anyone else to any special rights or advantages in world affairs. They recognize the sovereign equality of all states."

Finally, the two superpowers at least recognized their need to say something about a thing called the United Nations. The language they chose is so perfunctory it almost amounts to a joint confession from them that they are the two powers who have between them almost the United Nations out of any chance for real authority in world affairs.

"Both sides," said their communique, "will strive to strengthen the effectiveness of the United Nations on the basis of strict observance of the U. N. Charter."

"They regard the United Nations as an instrument for maintaining world peace and security, discouraging conflicts, and developing international cooperation. Accordingly, they will do their best to support United Nations efforts in the interests of international peace."

That language does not raise very high hopes, either, for the future attitude of our two superpowers toward the power to which they should be submitting, if they really want a world safe for themselves or for anyone else.

Even though the two powers may deprecate their own role as superpowers, they still intend to carry on in that role—that is the negative message which keeps peeping through their valiant efforts to play the superpower game in the most civilized manner possible.

These are not, after all, supermen. They are typical products of their systems, limited in their outlook and in their scope of action by what they feel to be the realities of their situations. Any of us, in the same position, would probably feel compelled to honor the same realities, even though we might suspect that what the world of practical affairs and practical politics calls the realities are really tragic notions and illusions.

Judging them for what they are, in the situation as it exists, they have made, these conferees at Moscow, noble efforts and achieved noble successes. We salute our own President, for his boldness in a

WALL STREET JOURNAL.

Inside Report

The Great Democratic Debate

By Rowland Evans Jr. and Robert D. Novak

ANASHEIM, Cal. — Sen. Bob Humphrey, kicking and screaming in backstage protest against political tactics being used by him, has been pulled into a great debate inside the Democratic party with implications well beyond this year's Presidential nomination.

Until last Thursday noon, there was no real sense of reluctance by Humphrey to actually deliver the hard attack against Sen. George McGovern that Humphrey's Neutemans see as his only chance in the climactic June 4 California primary.

Characteristically, Humphrey interpreted prepared anti-McGovern remarks to ever more of his own party's Democratic wing. But McGovern's massive defense outburst, Humphrey read from the speech, constitute "a unilateral program for military reductions."

Characteristically, Humphrey interpreted prepared anti-McGovern remarks to ever more of his own party's Democratic wing. But McGovern's massive defense outburst, Humphrey read from the speech, constitute "a unilateral program for military reductions."

Characteristically, Humphrey interpreted prepared anti-McGovern remarks to ever more of his own party's Democratic wing. But McGovern's massive defense outburst, Humphrey read from the speech, constitute "a unilateral program for military reductions."

Characteristically, Humphrey interpreted prepared anti-McGovern remarks to ever more of his own party's Democratic wing. But McGovern's massive defense outburst, Humphrey read from the speech, constitute "a unilateral program for military reductions."

Characteristically, Humphrey interpreted prepared anti-McGovern remarks to ever more of his own party's Democratic wing. But McGovern's massive defense outburst, Humphrey read from the speech, constitute "a unilateral program for military reductions."

Characteristically, Humphrey interpreted prepared anti-McGovern remarks to ever more of his own party's Democratic wing. But McGovern's massive defense outburst, Humphrey read from the speech, constitute "a unilateral program for military reductions."

Characteristically, Humphrey interpreted prepared anti-McGovern remarks to ever more of his own party's Democratic wing. But McGovern's massive defense outburst, Humphrey read from the speech, constitute "a unilateral program for military reductions."

Characteristically, Humphrey interpreted prepared anti-McGovern remarks to ever more of his own party's Democratic wing. But McGovern's massive defense outburst, Humphrey read from the speech, constitute "a unilateral program for military reductions."

Characteristically, Humphrey interpreted prepared anti-McGovern remarks to ever more of his own party's Democratic wing. But McGovern's massive defense outburst, Humphrey read from the speech, constitute "a unilateral program for military reductions."

Characteristically, Humphrey interpreted prepared anti-McGovern remarks to ever more of his own party's Democratic wing. But McGovern's massive defense outburst, Humphrey read from the speech, constitute "a unilateral program for military reductions."

Characteristically, Humphrey interpreted prepared anti-McGovern remarks to ever more of his own party's Democratic wing. But McGovern's massive defense outburst, Humphrey read from the speech, constitute "a unilateral program for military reductions."

Characteristically, Humphrey interpreted prepared anti-McGovern remarks to ever more of his own party's Democratic wing. But McGovern's massive defense outburst, Humphrey read from the speech, constitute "a unilateral program for military reductions."

Characteristically, Humphrey interpreted prepared anti-McGovern remarks to ever more of his own party's Democratic wing. But McGovern's massive defense outburst, Humphrey read from the speech, constitute "a unilateral program for military reductions."

him, the Soviet arms buildup shows the Kremlin is "building a massive sphere of influence around the world." As for Soviet aggressive intentions, Humphrey added: "Maybe I'm old hat, but the best way to prevent that is to be strong enough to earn their respect."

That view is anathema to the McGovern wing of the party. But McGovern still would rather not join Humphrey for past years to elide Humphrey for past support of the Vietnam war, content there is nothing radical in his defense policy and quietly chip away at Humphrey's black and Chinese constituencies.

The great Democratic debate may penetrate the four of California's 4.5 million registered Democrats who would well have their vote June 4 on a message rather than issues. Still, Humphrey's eleven-hour tactics dropped the McGovern wing's momentum.

Answering a question, Humphrey sharply the gap between his and McGovern's world view. "To

me, the Soviet arms buildup shows the Kremlin is "building a massive sphere of influence around the world." As for Soviet aggressive intentions, Humphrey added: "Maybe I'm old hat, but the best way to prevent that is to be strong enough to earn their respect."

That view is anathema to the McGovern wing of the party. But McGovern still would rather not join Humphrey for past years to elide Humphrey for past support of the Vietnam war, content there is nothing radical in his defense policy and quietly chip away at Humphrey's black and Chinese constituencies.

The great Democratic debate may penetrate the four of California's 4.5 million registered Democrats who would well have their vote June 4 on a message rather than issues. Still, Humphrey's eleven-hour tactics dropped the McGovern wing's momentum.

Answering a question, Humphrey sharply the gap between his and McGovern's world view. "To

me, the Soviet arms buildup shows the Kremlin is "building a massive sphere of influence around the world." As for Soviet aggressive intentions, Humphrey added: "Maybe I'm old hat, but the best way to prevent that is to be strong enough to earn their respect."

That view is anathema to the McGovern wing of the party. But McGovern still would rather not join Humphrey for past years to elide Humphrey for past support of the Vietnam war, content there is nothing radical in his defense policy and quietly chip away at Humphrey's black and Chinese constituencies.

The great Democratic debate may penetrate the four of California's 4.5 million registered Democrats who would well have their vote June 4 on a message rather than issues. Still, Humphrey's eleven-hour tactics dropped the McGovern wing's momentum.

Answering a question, Humphrey sharply the gap between his and McGovern's world view. "To

me, the Soviet arms buildup shows the Kremlin is "building a massive sphere of influence around the world." As for Soviet aggressive intentions, Humphrey added: "Maybe I'm old hat, but the best way to prevent that is to be strong enough to earn their respect."

That view is anathema to the McGovern wing of the party. But McGovern still would rather not join Humphrey for past years to elide Humphrey for past support of the Vietnam war, content there is nothing radical in his defense policy and quietly chip away at Humphrey's black and Chinese constituencies.

The great Democratic debate may penetrate the four of California's 4.5 million registered Democrats who would well have their vote June 4 on a message rather than issues. Still, Humphrey's eleven-hour tactics dropped the McGovern wing's momentum.

Hi Neighbor Burl Lyons, Publisher

We have been amazed at the response from friends and neighbors to our Happy Ads which appear on our classified page daily. Many of our readers tell us that the Happy Ads are the first thing they turn to when they pick up their newspaper.

The other day we received our first such ad from Vietnam and they came from Ed Howard R. McMillin who sent anniversary greetings to his parents and to a sister and her husband.

This writer John Jay McMillin in sending warm anniversary greetings.

While many of us have been enjoying the pleasant evenings and taking advantage of daylight saving time, more than 20 Herald employees have been engaged in a typing class at Manchester Community College two evenings a week as part of the preliminary training program toward the conversion of our computer room to a word processing system.

The class began April 26 and ends tomorrow. The instructor is Barbara Hensarcel who has done a full-time job. The Herald pupils, according to the instructor, have also displayed keen interest and achieved a remarkable attendance record despite some having to travel several miles from their homes to the college.

The typing class is a part of the program which we feel will enable us to make the conversion to word processing much smoother when the move is made into our new addition in early October.

We had a fine lunch and an enjoyable tour of Manchester Memorial Hospital last week thanks to Ed Kenney and Bart Citrus. All of Manchester can be proud of its fine medical facility.

We chatted about hospital operation and Ed confirmed the stories carried in several national publications calling attention to the declining birth rate in this country.

U.S. News and World Report says the decline in the number of military hospitalizations has been so great that pressure, has forced some hospitals to combine operations.

The magazine says there are some 3 million fewer children of pre-school age in this country today than there were 10 years ago. Just 3 million babies were born last year. As a result, the number of children aged 10 and over is a mere 0.9 per cent, only the second time since 1949 that the annual growth rate has been under 1 per cent.

We have visited hospitals in larger cities that cannot boast of the facilities found at Manchester Memorial and that's a tribute to those who have taken your time, money and prayers, toward the successful operation of it is today.

Only a handful of persons were on hand the other evening to hear an excellent explanation of the Phase II wage and price program by an agent of the Internal Revenue Service. The program, directed by the Public Affairs Committee of the Manchester Chamber, should have drawn a better attendance but it is difficult to get people inside during the summer months.

Those in doubt about what they can legally do under the wage and price program are encouraged to telephone the Internal Revenue Service rather than discover later, which could be costly from the standpoint of a fine, that the move they made was prohibited.

Idaho Gov. Cecil D. Andrus is disturbed, and perhaps justifiably so, because the Office of Emergency Preparedness has turned down his request for disaster area designation in the Idaho mining district where 81 miners were killed May 2. The designation would have made unemployment benefits available to widows and orphans of the miners.

"Apparently this nation can lose \$20 million to Lockheed but they won't recognize the plight of a family," said the governor.

The governor added that the amount of money involved is less than what it would take for one household to buy a car. "Sympathy and concern for the families, as expressed from Washington, is fine but they don't buy groceries," commented the Idaho Gov.

U.S. News and World Report says the U.S. Government is spending 1.5 million dollars a month to protect presidential candidates. It is estimated that it costs between \$100,000 and \$200,000 a month to protect one candidate from assassination attempts. It is estimated that it is so fortunate in this free nation that such a heavy expenditure is necessary; the funds would go a long way in improving some of our domestic programs.

Business Mirror

Charter Flight Battle Joined by the Giants

NEW YORK (AP) — Two giant charter airlines, Pan American World Airways and TWA, have joined the battle to keep up their charter flight business. The airlines are competing against scheduled airlines.

The larger scheduled airlines, particularly Pan American, have complained frequently that the inroads made by charter flights have cut their traffic by the supplement of charter flights.

No matter which type of airline is involved, the basic economic factor in charter flights is that the aircraft has no empty seats. The airlines are competing for the same group of passengers.

Under the group principle, the passengers must be people with an "affinity" for the airline. The airlines are competing for the same group of passengers.

They had a fine lunch and an enjoyable tour of Manchester Memorial Hospital last week thanks to Ed Kenney and Bart Citrus. All of Manchester can be proud of its fine medical facility.

We chatted about hospital operation and Ed confirmed the stories carried in several national publications calling attention to the declining birth rate in this country.

U.S. News and World Report says the decline in the number of military hospitalizations has been so great that pressure, has forced some hospitals to combine operations.

The magazine says there are some 3 million fewer children of pre-school age in this country today than there were 10 years ago. Just 3 million babies were born last year. As a result, the number of children aged 10 and over is a mere 0.9 per cent, only the second time since 1949 that the annual growth rate has been under 1 per cent.

We have visited hospitals in larger cities that cannot boast of the facilities found at Manchester Memorial and that's a tribute to those who have taken your time, money and prayers, toward the successful operation of it is today.

Only a handful of persons were on hand the other evening to hear an excellent explanation of the Phase II wage and price program by an agent of the Internal Revenue Service. The program, directed by the Public Affairs Committee of the Manchester Chamber, should have drawn a better attendance but it is difficult to get people inside during the summer months.

Those in doubt about what they can legally do under the wage and price program are encouraged to telephone the Internal Revenue Service rather than discover later, which could be costly from the standpoint of a fine, that the move they made was prohibited.

Idaho Gov. Cecil D. Andrus is disturbed, and perhaps justifiably so, because the Office of Emergency Preparedness has turned down his request for disaster area designation in the Idaho mining district where 81 miners were killed May 2. The designation would have made unemployment benefits available to widows and orphans of the miners.

"Apparently this nation can lose \$20 million to Lockheed but they won't recognize the plight of a family," said the governor.

The governor added that the amount of money involved is less than what it would take for one household to buy a car. "Sympathy and concern for the families, as expressed from Washington, is fine but they don't buy groceries," commented the Idaho Gov.

U.S. News and World Report says the U.S. Government is spending 1.5 million dollars a month to protect presidential candidates. It is estimated that it costs between \$100,000 and \$200,000 a month to protect one candidate from assassination attempts. It is estimated that it is so fortunate in this free nation that such a heavy expenditure is necessary; the funds would go a long way in improving some of our domestic programs.

Idaho Gov. Cecil D. Andrus is disturbed, and perhaps justifiably so, because the Office of Emergency Preparedness has turned down his request for disaster area designation in the Idaho mining district where 81 miners were killed May 2. The designation would have made unemployment benefits available to widows and orphans of the miners.

"Apparently this nation can lose \$20 million to Lockheed but they won't recognize the plight of a family," said the governor.

The governor added that the amount of money involved is less than what it would take for one household to buy a car. "Sympathy and concern for the families, as expressed from Washington, is fine but they don't buy groceries," commented the Idaho Gov.

U.S. News and World Report says the U.S. Government is spending 1.5 million dollars a month to protect presidential candidates. It is estimated that it costs between \$100,000 and \$200,000 a month to protect one candidate from assassination attempts. It is estimated that it is so fortunate in this free nation that such a heavy expenditure is necessary; the funds would go a long way in improving some of our domestic programs.

Tollard

Democrats To Choose Between Delegate Slates

Toworow's primary over Democratic state convention delegates involves a choice between the town-committee endorsed and uncommitted slates headed by Democratic Town Chairman Charles Thifault, and a rival slate committed to Ben George McGovern headed by Mrs. Mary McNally.

The polls will be open from noon until 8 p.m. at the Hills Memorial School, (the same location and time as last Thursday's budget referendum). Approximately 1,300 Democrats are eligible to cast their votes at the polls.

Mrs. McNally, on the other hand, claims the Democratic Town Committee is "not open" to people with a variety of political opinions and claims the majority of its votes are "indirectly controlled" by Thifault.

"We know it would be a waste of time to try to be selected at the polls," Thifault has criticized the McNally or insurgent slate for calling a primary which will cost the town \$200, claiming they should have carried their bid through the Democratic Town Committee.

He has said that some of the insurgent group was at the open meeting of the committee called by Thifault, and that Thifault was nominated from the town committee meeting.

The town committee endorsed slates consists of Thifault, Harold Garrity and Wal-nons was nominated from the town committee meeting.

The town committee endorsed slates consists of Thifault, Harold Garrity and Wal-nons was nominated from the town committee meeting.

The town committee endorsed slates consists of Thifault, Harold Garrity and Wal-nons was nominated from the town committee meeting.

The town committee endorsed slates consists of Thifault, Harold Garrity and Wal-nons was nominated from the town committee meeting.

The town committee endorsed slates consists of Thifault, Harold Garrity and Wal-nons was nominated from the town committee meeting.

The town committee endorsed slates consists of Thifault, Harold Garrity and Wal-nons was nominated from the town committee meeting.

The town committee endorsed slates consists of Thifault, Harold Garrity and Wal-nons was nominated from the town committee meeting.

The town committee endorsed slates consists of Thifault, Harold Garrity and Wal-nons was nominated from the town committee meeting.

The town committee endorsed slates consists of Thifault, Harold Garrity and Wal-nons was nominated from the town committee meeting.

The town committee endorsed slates consists of Thifault, Harold Garrity and Wal-nons was nominated from the town committee meeting.

The town committee endorsed slates consists of Thifault, Harold Garrity and Wal-nons was nominated from the town committee meeting.

The town committee endorsed slates consists of Thifault, Harold Garrity and Wal-nons was nominated from the town committee meeting.

The town committee endorsed slates consists of Thifault, Harold Garrity and Wal-nons was nominated from the town committee meeting.

The town committee endorsed slates consists of Thifault, Harold Garrity and Wal-nons was nominated from the town committee meeting.

Tollard

Budget Cut to 46 Mills

The Board of Finance cut an estimated \$200,000 from the Board of Education budget; cut by \$200,000. The school budget of \$2,350,000 had already been cut by \$200,000. The finance board came up with the two mill cut, in an attempt to eliminate any possibility of another referendum, according to Warner. "We feel this is an adequate compromise, taking some from each budget," he said.

The proposed budget will be presented at a public hearing Friday night at 8 in the Hills Memorial School gym.

The decision of the finance board was unanimous, but the board was altered pending the outcome of comments made at the public hearing.

Petitions opposing any further cuts in the school budget were prohibited the requested \$100,000 more than had been estimated for the school budget and the petitions at the time of budget preparation submitted last night; the fi-

ber Scott Warner, compared to the 300 signature petition which he filed calling for a referendum. The school budget of \$2,350,000 had already been cut by \$200,000. The finance board came up with the two mill cut, in an attempt to eliminate any possibility of another referendum, according to Warner. "We feel this is an adequate compromise, taking some from each budget," he said.

The proposed budget will be presented at a public hearing Friday night at 8 in the Hills Memorial School gym.

The decision of the finance board was unanimous, but the board was altered pending the outcome of comments made at the public hearing.

Petitions opposing any further cuts in the school budget were prohibited the requested \$100,000 more than had been estimated for the school budget and the petitions at the time of budget preparation submitted last night; the fi-

ber Scott Warner, compared to the 300 signature petition which he filed calling for a referendum. The school budget of \$2,350,000 had already been cut by \$200,000. The finance board came up with the two mill cut, in an attempt to eliminate any possibility of another referendum, according to Warner. "We feel this is an adequate compromise, taking some from each budget," he said.

The proposed budget will be presented at a public hearing Friday night at 8 in the Hills Memorial School gym.

The decision of the finance board was unanimous, but the board was altered pending the outcome of comments made at the public hearing.

Petitions opposing any further cuts in the school budget were prohibited the requested \$100,000 more than had been estimated for the school budget and the petitions at the time of budget preparation submitted last night; the fi-

ber Scott Warner, compared to the 300 signature petition which he filed calling for a referendum. The school budget of \$2,350,000 had already been cut by \$200,000. The finance board came up with the two mill cut, in an attempt to eliminate any possibility of another referendum, according to Warner. "We feel this is an adequate compromise, taking some from each budget," he said.

The proposed budget will be presented at a public hearing Friday night at 8 in the Hills Memorial School gym.

The decision of the finance board was unanimous, but the board was altered pending the outcome of comments made at the public hearing.

Petitions opposing any further cuts in the school budget were prohibited the requested \$100,000 more than had been estimated for the school budget and the petitions at the time of budget preparation submitted last night; the fi-

ber Scott Warner, compared to the 300 signature petition which he filed calling for a referendum. The school budget of \$2,350,000 had already been cut by \$200,000. The finance board came up with the two mill cut, in an attempt to eliminate any possibility of another referendum, according to Warner. "We feel this is an adequate compromise, taking some from each budget," he said.

The proposed budget will be presented at a public hearing Friday night at 8 in the Hills Memorial School gym.

The decision of the finance board was unanimous, but the board was altered pending the outcome of comments made at the public hearing.

Tollard

Democracy To Choose Between Delegate Slates

Toworow's primary over Democratic state convention delegates involves a choice between the town-committee endorsed and uncommitted slates headed by Democratic Town Chairman Charles Thifault, and a rival slate committed to Ben George McGovern headed by Mrs. Mary McNally.

The polls will be open from noon until 8 p.m. at the Hills Memorial School, (the same location and time as last Thursday's budget referendum). Approximately 1,300 Democrats are eligible to cast their votes at the polls.

Mrs. McNally, on the other hand, claims the Democratic Town Committee is "not open" to people with a variety of political opinions and claims the majority of its votes are "indirectly controlled" by Thifault.

"We know it would be a waste of time to try to be selected at the polls," Thifault has criticized the McNally or insurgent slate for calling a primary which will cost the town \$200, claiming they should have carried their bid through the Democratic Town Committee.

He has said that some of the insurgent group was at the open meeting of the committee called by Thifault, and that Thifault was nominated from the town committee meeting.

The town committee endorsed slates consists of Thifault, Harold Garrity and Wal-nons was nominated from the town committee meeting.

The town committee endorsed slates consists of Thifault, Harold Garrity and Wal-nons was nominated from the town committee meeting.

The town committee endorsed slates consists of Thifault, Harold Garrity and Wal-nons was nominated from the town committee meeting.

The town committee endorsed slates consists of Thifault, Harold Garrity and Wal-nons was nominated from the town committee meeting.

The town committee endorsed slates consists of Thifault, Harold Garrity and Wal-nons was nominated from the town committee meeting.

The town committee endorsed slates consists of Thifault, Harold Garrity and Wal-nons was nominated from the town committee meeting.

The town committee endorsed slates consists of Thifault, Harold Garrity and Wal-nons was nominated from the town committee meeting.

The town committee endorsed slates consists of Thifault, Harold Garrity and Wal-nons was nominated from the town committee meeting.

The town committee endorsed slates consists of Thifault, Harold Garrity and Wal-nons was nominated from the town committee meeting.

The town committee endorsed slates consists of Thifault, Harold Garrity and Wal-nons was nominated from the town committee meeting.

The town committee endorsed slates consists of Thifault, Harold Garrity and Wal-nons was nominated from the town committee meeting.

The town committee endorsed slates consists of Thifault, Harold Garrity and Wal-nons was nominated from the town committee meeting.

The town committee endorsed slates consists of Thifault, Harold Garrity and Wal-nons was nominated from the town committee meeting.

The town committee endorsed slates consists of Thifault, Harold Garrity and Wal-nons was nominated from the town committee meeting.

Tollard

Budget Cut to 46 Mills

The Board of Finance cut an estimated \$200,000 from the Board of Education budget; cut by \$200,000. The school budget of \$2,350,000 had already been cut by \$200,000. The finance board came up with the two mill cut, in an attempt to eliminate any possibility of another referendum, according to Warner. "We feel this is an adequate compromise, taking some from each budget," he said.

The proposed budget will be presented at a public hearing Friday night at 8 in the Hills Memorial School gym.

The decision of the finance board was unanimous, but the board was altered pending the outcome of comments made at the public hearing.

Petitions opposing any further cuts in the school budget were prohibited the requested \$100,000 more than had been estimated for the school budget and the petitions at the time of budget preparation submitted last night; the fi-

ber Scott Warner, compared to the 300 signature petition which he filed calling for a referendum. The school budget of \$2,350,000 had already been cut by \$200,000. The finance board came up with the two mill cut, in an attempt to eliminate any possibility of another referendum, according to Warner. "We feel this is an adequate compromise, taking some from each budget," he said.

The proposed budget will be presented at a public hearing Friday night at 8 in the Hills Memorial School gym.

The decision of the finance board was unanimous, but the board was altered pending the outcome of comments made at the public hearing.

Petitions opposing any further cuts in the school budget were prohibited the requested \$100,000 more than had been estimated for the school budget and the petitions at the time of budget preparation submitted last night; the fi-

ber Scott Warner, compared to the 300 signature petition which he filed calling for a referendum. The school budget of \$2,350,000 had already been cut by \$200,000. The finance board came up with the two mill cut, in an attempt to eliminate any possibility of another referendum, according to Warner. "We feel this is an adequate compromise, taking some from each budget," he said.

### Nixons Visit Poland

(Continued from Page One) In the Persian Gulf following Britain's withdrawal from the region and oil policy.

Nixon's visit to Poland is a surprise but reaffirmed mutual friendship.

Iran like the United States has special ties with Pakistan, and the document said of South Asia problems.

"The President and Mrs. Jimmy Carter visited the hope that Pakistan and India would find ways to reach a just and honorable settlement of their bordering issues. They noted with satisfaction the initiative taken by both countries for meetings which hold the promise through George C. Wallace as a running mate.

The tone of the second telecast between the two front-runners for the Democratic presidential nomination was milder than their first encounter. It focused largely on McGovern's tax and defense proposals.

Early in Tuesday night's debate, Humphrey apologized for having suggested Sunday for the debate. McGovern would be a loss to propose what the Minnesota termed a "one-night" plan, his tax reform program and his call for a \$2 billion cut in defense spending.

Humphrey displayed a less aggressive style, apparently reflecting fear by advisers he had been too strident Sunday night, but continued to assail McGovern's "incoherent" proposals and his call for a \$2 billion cut in defense spending.

### Apology Voiced After Debate in California Race

LOS ANGELES (AP) — Sen. Hubert H. Humphrey has apologized for saying that Sen. George McGovern's tax plan was "incoherent" and "unintelligible" and both of the candidates have rejected any possibility of having Alabama Gov. George C. Wallace as a running mate.

The tone of the second telecast between the two front-runners for the Democratic presidential nomination was milder than their first encounter. It focused largely on McGovern's tax and defense proposals.

Early in Tuesday night's debate, Humphrey apologized for having suggested Sunday for the debate. McGovern would be a loss to propose what the Minnesota termed a "one-night" plan, his tax reform program and his call for a \$2 billion cut in defense spending.

Humphrey displayed a less aggressive style, apparently reflecting fear by advisers he had been too strident Sunday night, but continued to assail McGovern's "incoherent" proposals and his call for a \$2 billion cut in defense spending.



The girls in the band... Lyu Neary, second from right, and friends are treated exactly as their male comrades in Cambodia's elite paratroopers—no special favors.

### Women's Lib, Cambodian Style: Equal Rights, Equal Suffering

By TOM TIEDE  
KAM PAUL, Cambodia—(NEA) — When 21-year-old Lyu Neary was wounded high on the thin during a recent battle, Cambodian medics cut away the trousers she wore, and she was treated as a man (and, now, woman).

Lyu Neary is a woman. And what a woman. She is a soldier in the Cambodian army. She has been taught to shrug off bomb concussion, snake bites, leeches and enemy tortures. And, most importantly, she can, and does, jump from airplanes, land in the middle of wars, and then do what has to be done—even kill—to carry out her mission orders.

Not long ago, while carrying out orders, and sagging under a combat pack that weighed almost as much as she (35 pounds), Lyu Neary spotted a Khmer Rouge (Cambodian Communist) in a tree. Unfortunately, he saw her first. The guerrilla opened fire—and caught the girl in the thigh. "I didn't fall over," she says, and so fired back at the enemy. "Then when I moved, I fell over." She stayed over, seriously wounded, for three months in a field hospital before being raised fit, and then put back on the front for more war.

For her sacrifices as a woman, Lyu Neary has received no considerations other than a separate barracks to sleep in (sometimes). For her patriotism as a soldier, she has received practically nothing.

She has been awarded one medal. She is paid \$14 a month (50 cents daily), part of which is returned to the military for rations. As yet, after two years of service, she has not been given any rank, and she is expected to obey without question (on pain of death), work as long as required, and stay in uniform "until national security is assured."

Yet Lyu Neary doesn't complain. Much. At least not publicly. Cambodian equal rights haven't progressed to the stage where male chauvinist pig sergeants will permit women in the ranks much more than equal work and equal suffering. "You can talk to her," says Lyu Neary's four company topkick, "but I will have to listen too."

Still, like most common soldiers, the woman's deep thoughts about killing and privation and hardship are quite obvious. And she says as much, even with her sergeant listening near. Sitting on the running board of a truck, blowing the flies out of her eyes, smoothing her hair, she sighs: "I always want to be a mother. Now I am a soldier. As long as I am a soldier, I cannot be a mother." The sergeant doesn't catch it, but it is a beautiful, unusual condemnation of war.

### Manchester Hospital Notes

ADMITTED SUNDAY: Willis P. Hoyt, 43 Foley St.

ADMITTED YESTERDAY: Josephine Fortier, Warren St.; Amy K. Barreira, 78 Bigelow St.; Robert W. Phillips, 25 Carville, 25 Hartl Dr.; Robert J. Caravella, 25 Hartl Dr.; Talcottville.

Also Herbert A. Jeremia, 56 Wilshire Rd.; Vernon; James P. Hardie, 43 Orest St.; Lillian R. Gebbie, 810 North St.; Nancy J. Pilver, 18 Radding St.; Robert W. Phillips, 25 Carville, 25 Hartl Dr.; Robert J. Caravella, 25 Hartl Dr.; Talcottville.

Also Herbert A. Jeremia, 56 Wilshire Rd.; Vernon; James P. Hardie, 43 Orest St.; Lillian R. Gebbie, 810 North St.; Nancy J. Pilver, 18 Radding St.; Robert W. Phillips, 25 Carville, 25 Hartl Dr.; Robert J. Caravella, 25 Hartl Dr.; Talcottville.

### About Town

Royal Bank Precipitously closed Friday at 8 p.m. at Orange Hall.

The Jet Sets square dance group will have a dance Friday from 8 to 11 p.m. at the Pratt and Whitney Aircraft Club, 200 Gessner Rd., East Hartford.

Tim Ryan is the caller. The dance is open to all square dancers.

The Anne Spencer Nurses Aides will have their annual picnic June 6 at 8 p.m. at the school. Cook drinks, popcorn, penny candy and ice cream sundae will be available. There also will be a white elephant table, fish pond, penny candy and bake sale, clown games and a Indian make-up. Grade 4 students will conduct a car wash.

Mrs. Fannie Hewitt Kleiboh, who for many years lived at 24 Hawthorne St., is now a resident at the Manchester Manor Convalescent Home.

### South Windsor Police Find Man Dead at Home

SOUTH WINDSOR — Joseph R. Gallo Sr., 42, of 43 Manor Lane was found dead Monday at his home by police who were summoned by his wife, Mrs. Joyce Despard Gallo.

The medical examiner said the death was a suicide.

Mr. Gallo was born in Hartford and had lived in the Great Neck, N.Y., area for 20 years. He was a member of the Rev. Rosenberger Council, KOC, and the Teamsters Union Local 671.

Survivors are, besides his wife, Mrs. Joyce Despard Gallo; three sons, Wade Gallo, John Gallo and Joseph R. Gallo Jr., all of South Windsor; three brothers, Sebastian Gallo, Salvatore Gallo and Carmello (Tonto) Gallo, all of East Hartford; and a sister, Mrs. Mary Frazee of Hartford.

The funeral will be tomorrow at 8 a.m. from the D'Esposito Funeral Home, 3203 Wetherfield Ave., Hartford, with a Mass of the Resurrection at St. Margaret Mary Church at 9 a.m. Burial will be in St. Benedict Cemetery, Bloomfield.

Friends may call at the funeral chapel tonight from 7 to 9 p.m.

### Obituary

Mrs. Clifford R. Lowery  
Mrs. Mae Cole Lowery, 69, of Palm Springs, Calif., formerly of Manchester, died May 22 in Palm Springs. She was the wife of Clifford R. Lowery.

Funeral services and burial will be in Palm Springs. The funeral will be at 10 a.m. at St. Mary's Church, Palm Springs. Burial will be in St. Mary's cemetery, Palm Springs.

Mrs. Lowery was born in Portadown, Ireland, and had come to Manchester before moving to California.

Survivors, besides her husband, are two sons, Thomas Lowery and Donald Lowery, both of California; a brother, David R. Cole of Centerbrook; four sisters, Mrs. Louise Long of Manchester, Mrs. Violet Jewell of Bolton, Mrs. Helen Naiskaka of Torrington and Mrs. Edna Williams of Chester, Mass.; four grandchildren and a great-grandchild.

Emil A. Schulz  
Private funeral services for Emil A. Schulz of 18 Warren from the street.

Nixon and the Shah set aside time for two private meetings during the brief visit, but there was no indication of any major differences between them. White House officials said the agenda covered the Middle East, South Asia developments.

### men's and young men's apparel

FINEST LABELS IN MEN'S CLOTHING

### Father's Day is June 18 PUT DAD IN THE NEWS WITH KNIT SLACKS

Wrinkles are out, knits are in. Double knits that stretch and give and always spring back into shape. Give Dad a gift of new-now fashion... a pair of polyester double-knits that are comfortable washable and handsome! Choose from a handsome array of solids, diagonals, stripes, herringbone weaves, plaids and checks.



from \$15

martin's

Manchester Parkade — Berlin Webster Square

### U.S. Jets Batter Red Area

(Continued from Page One) out the Tam Dao railroad bridge 11 miles north of the city and cut the railroad tracks to the northward approach of the Dien Chau railroad bridge eight miles farther north.

The Duc Lam highway bridge 34 miles southeast of Vinh was reported damaged.

Officials said the objective is to cut Vinh off from the rest of North Vietnam and attack war materials already there for shipment to the South. U.S. planes already have missed the harbor.

Newly lighter-bombers also hit two fuel depots on the outskirts of the city, and the pilots said they left both in flames.

Officials in Saigon claimed that most major bridges and roads in the northeast and northwest rail lines from Hanoi to the north had now been cut.

He said the North Vietnamese see offensive is bogged down by supply problems but the enemy still will attempt to attack Hanoi.

"Sure they intend to attack Hanoi," he said. "Not only with the exception of the troops they have now in South Vietnam, but they will try to reinforce with another division. The attempt is one thing, what they are capable of is another. As they reinforce, they will have even more difficulties in logistics."

They also declared, "We will recapture Quang Tri," the last of the new quarterly number to justify the effort.

North Vietnam Jun 25, 1972

Little Acom seminary students matching the first-royal tomb was sealed off an hour before Nixon's motorcade through the city "are much more recent palm and the date palm weeded" and have not.

### NATO Backs Troop Cuts

(Continued from Page One) Nixon's signature in Moscow of limits on nuclear weapons, and the resolve of the Soviets and Americans to continue their negotiations actively. They said they hoped the accord would be the start of a new and promising era of talks on the control of armaments.

The ministers also expressed satisfaction with West Germany's new treaties with the Soviet Union and Poland. They said they hoped the agreement on West Berlin with the Soviet Union, due to be signed on Friday, will mean the beginning of a new era for the city, free from the tension which has characterized its history over the past 23 years.

In view of this development, they said they accepted the invitation of the Finnish government to start preparations for a conference on security and cooperation in Europe.

The ministers said their aim would be to determine whether there is enough common ground to justify the effort.

They also declared, "We will recapture Quang Tri," the last of the new quarterly number to justify the effort.

North Vietnam Jun 25, 1972

Little Acom seminary students matching the first-royal tomb was sealed off an hour before Nixon's motorcade through the city "are much more recent palm and the date palm weeded" and have not.

### Bombs Rattle Tehran

(Continued from Page One) the tomb, earlier, at the quiet palace where he spent the night, he sat alone in the back seat of his bulletproof, bomb-resistant limousine while his aides and security officials debated whether he should stick to his itinerary. Finally, Nixon himself gave the go-ahead after H.R. Halderman, a presidential assistant, got into the car with him for a brief conference.

J. Bruce Whelan, a presidential press aide, said the chief executive spent most of the waiting time in the car writing on a legal-size yellow pad and going through papers.

Newsmen on the scene said the blast occurred about 100 feet from the spot where the President was to place a wreath of the late Shah, the father of the current monarch.

Debris was thrown into the air and surrounding trees were shaken. Later, two sticks of dynamite were found in the area, it was said.

First reports said no debris landed in the place where the President was to lay the wreath.

After the ceremony, the President was to meet with the Shah. The quality for the final, both of the new quarterly number to justify the effort.

North Vietnam Jun 25, 1972

Little Acom seminary students matching the first-royal tomb was sealed off an hour before Nixon's motorcade through the city "are much more recent palm and the date palm weeded" and have not.

### Mexican Labor Hearing Called

LOS ANGELES (AP) — A hearing is scheduled for Tuesday by the National Labor Relations Board against Ramon's Mexican Food Products, owned by U.S. Treasurer Remana Banuelos.

During the current boomers strike at the plant, the charges set ran on the runway and it Tuesday, the company fired into two jailers, wounding several passengers aboard the plane. The charges set ran on the runway and it Tuesday, the company fired into two jailers, wounding several passengers aboard the plane.

The charges set ran on the runway and it Tuesday, the company fired into two jailers, wounding several passengers aboard the plane.

### Lottery 'Extra' Due Thursday

(Continued from Page One) on the date corresponding to the drawing date of the ticket. Ident was to meet with the President was to place a wreath of the late Shah, the father of the current monarch.

Debris was thrown into the air and surrounding trees were shaken. Later, two sticks of dynamite were found in the area, it was said.

First reports said no debris landed in the place where the President was to lay the wreath.

After the ceremony, the President was to meet with the Shah. The quality for the final, both of the new quarterly number to justify the effort.

North Vietnam Jun 25, 1972

Little Acom seminary students matching the first-royal tomb was sealed off an hour before Nixon's motorcade through the city "are much more recent palm and the date palm weeded" and have not.

### Airport Massacre Leaves 25 Dead

(Continued from Page One) he exploded a grenade, blowing three of his men to pieces, police said. The captured terrorist threw from Brussels via Vienna, escaping both in the wall of the building, and smashed every Tel Aviv window on one side. Homes within a radius of 100 yards were also damaged.

Police guards on the building both 23, and Dalsuke Namba, who the terrorist ran after them, lit a flare, and he was captured. He later died.

Police guards on the building both 23, and Dalsuke Namba, who the terrorist ran after them, lit a flare, and he was captured. He later died.

Police guards on the building both 23, and Dalsuke Namba, who the terrorist ran after them, lit a flare, and he was captured. He later died.

### North Magnetic Pole's a Traveler

WASHINGTON — What is located in 181 the North Magnetic Pole was in Boothia Peninsula, about 1,200 miles from the geographic North Pole. Apparently it had traveled 25 miles north by 1964. In 1948 it turned up 200 miles away at Prince of Wales Island.

It had shifted 10 miles further north by 1962, crossing Barrow Strait, and now it is in the northwest coast of Baffin Island.

### What does it mean when you're label looking and there's no label?

marshall's carries only top quality famous name merchandise at consistent everyday savings of 20% to 60% below the prices you pay in department or specialty stores. Many items bear the original famous labels. Some manufacturers require the label be removed. It's the only difference. Day after day, we buy current overstocks, samples and selected irregulars and pass the savings on to you!!!

come see what we're all about...

marshall's

misses' first quality nationally advertised better sportswear at savings of \$13 to \$32

selling elsewhere at \$20 to \$48

marshall's low price

699 to 1599

See the famous label in each! See blazer! Short skirt! Striped! Pant! And more! Wish we could mention the very famous name, but you're sure to instantly recognize it. See fashionable and expertly tailored sportswear specifically for misses. All in easy-care 100% polyester. 100% cotton or 60% cotton-40% polyester blends. Choose from a spectacular collection of solids, stripes, plaids, and solids. Misses sizes 6 to 18.

save 75% on men's leading name long sleeve knit shirts

if perfect \$13.00 marshall's low price

299

save \$5 to \$24 on top men's and women's golf shoes

if perfect \$17.95 to \$35.00 marshall's low price

Men's 1099 to 1999 Women's 899 to 1099

save 40% to 70% on girls' and teens' famous make sportswear

if perfect \$5.00 to \$10.00 marshall's low price

299

Shirts, short sets and shirt dresses of easy-care and non-iron fabrics. See solids, prints (cotton, animal, stripes). Fancy, simple, dressy, dressy. Slipless and short sleeves. Slip irregulars. Girls' 7 to 14; teens' 6 to 14.

Home of nationally advertised "name brands" arriving daily at low low prices!!!

40% savings on boys' top make first quality cut-off jeans!!!

selling elsewhere at \$25.00 marshall's low price

199

Great for hot summer wear. Better maker's first quality jeans. Solid and fancy of easy-care cotton. You'll want several for camp and play. Boys' sizes 8 to 20.

save 33 1/3% to 55% on famous make bermuda shorts for men!

if perfect \$6 to \$9 marshall's low price

399

Cool, comfortable easy-to-care for permanent press bermuda shorts. All with belt loops and waist adjusters for a fit in many fancy and solid colors. Be early for best selection. Slight irregulars. Sizes 34 to 44.

special purchase of top make first quality 9 x 12 indoor-outdoor broadloom at \$7 to \$17 savings

selling elsewhere at \$25.00 to \$35.00 marshall's low price

1799

Rugged 100% olefin fiber stands up to years of wear indoors or out, making this "active area" rug a fantastic value. Just great near the pool, on the porch, anywhere in the house. Available in most popular gold color only. Stainproof, too - you can wash it clean with a garden hose. Be sure to come early! All first quality.

open m. thru sat. 9 a.m. to 10 p.m.

410 CRYSTAL ST. 785 PARK AVE. 28 GARFIELD ST. MANCHESTER BLOOMFIELD NEWINGTON

Summer KICK-OFF SALE!

Arthur's DRUG STORES

100 FARMINGTON AVE. HARTFORD, CONN. 527-1154  
843 MAIN ST. MANCHESTER, CONN. 462-1305  
144 BRADSHAW ST. WINDSOR, CONN. 888-5282  
40 MAIN ST. ROCKVILLE, CONN. 873-9123

STILL GOING ON!

Juliette SOLID STATE

8 TRACK STEREO SYSTEM

MODEL STR-1100X  
Solid State Instant Sound AN/FM. 15.5 FM Stereo Multiplex Radio. Built-in 8 track cassette player. 8 track suspension speaker system. Walnut grain wood cabinet, with black and chrome metal feet. 50 Watt (RMS). 5.801 ft suspension speaker System in matched modular cabinets with vented grill grilles and two powerful 5" PM dynamic air suspended free edge speakers "2" and "4" speaker selector switch for selecting one of two stereo systems. For regular two channel stereo or stereo with double stereo. Blamended side-venter stereo dual. Black-out dial. Crank type tuning. Rotary function selector and volume knob controls. Tone control sliding lever. Speaker balance slide control. AF. Stereo indicator. 8-track cartridge chamber cover panel. Automatic tape program changer. Push-button manual program changer. Program indicator. Long life AC-type electronic motor. Headphone Jack. Phono inputs. Rear speaker jacks for two speakers. Includes FM line cord antenna. Terminals for external FM antenna. Size: 14 1/2" x 15 1/2" x 15 1/2". Speakers: 150 W x 10 W x 5 V D.

Reg. 129.95 NOW \$99.95

This item is in limited stock. Orders Taken for Free Delivery!

JUST ARRIVED! Beautiful Selection of QUALITY NECK TIES TODAY'S STYLES and COLORS

FESTIVAL TRASKI CAN Reg. \$2.64 17z

POPULAR WIDTH Values to ONLY \$4. \$15.00

SALE STARTS TODAY and RUNS THRU SUN. NIGHT!

SALE ITEM QUANTITIES LIMITED TO STOCK IN STORE WE RESERVE THE RIGHT TO LIMIT QUANTITIES. Not Responsible for Typographical Errors.

Charge It With Your MASTER CHARGE CARD

martin's

men's and young men's apparel

FINEST LABELS IN MEN'S CLOTHING

Father's Day is June 18

PUT DAD IN THE NEWS WITH KNIT SLACKS

Wrinkles are out, knits are in. Double knits that stretch and give and always spring back into shape. Give Dad a gift of new-now fashion... a pair of polyester double-knits that are comfortable washable and handsome! Choose from a handsome array of solids, diagonals, stripes, herringbone weaves, plaids and checks.

from \$15

martin's

Manchester Parkade — Berlin Webster Square

marshall's

misses' first quality nationally advertised better sportswear at savings of \$13 to \$32

selling elsewhere at \$20 to \$48

marshall's low price

699 to 1599

See the famous label in each! See blazer! Short skirt! Striped! Pant! And more! Wish we could mention the very famous name, but you're sure to instantly recognize it. See fashionable and expertly tailored sportswear specifically for misses. All in easy-care 100% polyester. 100% cotton or 60% cotton-40% polyester blends. Choose from a spectacular collection of solids, stripes, plaids, and solids. Misses sizes 6 to 18.

save 75% on men's leading name long sleeve knit shirts

if perfect \$13.00 marshall's low price

299

save \$5 to \$24 on top men's and women's golf shoes

if perfect \$17.95 to \$35.00 marshall's low price

Men's 1099 to 1999 Women's 899 to 1099

save 40% to 70% on girls' and teens' famous make sportswear

if perfect \$5.00 to \$10.00 marshall's low price

299

Shirts, short sets and shirt dresses of easy-care and non-iron fabrics. See solids, prints (cotton, animal, stripes). Fancy, simple, dressy, dressy. Slipless and short sleeves. Slip irregulars. Girls' 7 to 14; teens' 6 to 14.

Home of nationally advertised "name brands" arriving daily at low low prices!!!

40% savings on boys' top make first quality cut-off jeans!!!

selling elsewhere at \$25.00 marshall's low price

199

Great for hot summer wear. Better maker's first quality jeans. Solid and fancy of easy-care cotton. You'll want several for camp and play. Boys' sizes 8 to 20.

save 33 1/3% to 55% on famous make bermuda shorts for men!

if perfect \$6 to \$9 marshall's low price

399

Cool, comfortable easy-to-care for permanent press bermuda shorts. All with belt loops and waist adjusters for a fit in many fancy and solid colors. Be early for best selection. Slight irregulars. Sizes 34 to 44.

special purchase of top make first quality 9 x 12 indoor-outdoor broadloom at \$7 to \$17 savings

selling elsewhere at \$25.00 to \$35.00 marshall's low price

1799

Rugged 100% olefin fiber stands up to years of wear indoors or out, making this "active area" rug a fantastic value. Just great near the pool, on the porch, anywhere in the house. Available in most popular gold color only. Stainproof, too - you can wash it clean with a garden hose. Be sure to come early! All first quality.

open m. thru sat. 9 a.m. to 10 p.m.

410 CRYSTAL ST. 785 PARK AVE. 28 GARFIELD ST. MANCHESTER BLOOMFIELD NEWINGTON

marshall's

misses' first quality nationally advertised better sportswear at savings of \$13 to \$32

selling elsewhere at \$20 to \$48

marshall's low price

699 to 1599

See the famous label in each! See blazer! Short skirt! Striped! Pant! And more! Wish we could mention the very famous name, but you're sure to instantly recognize it. See fashionable and expertly tailored sportswear specifically for misses. All in easy-care 100% polyester. 100% cotton or 60% cotton-40% polyester blends. Choose from a spectacular collection of solids, stripes, plaids, and solids. Misses sizes 6 to 18.

save 75% on men's leading name long sleeve knit shirts

if perfect \$13.00 marshall's low price

299

save \$5 to \$24 on top men's and women's golf shoes

if perfect \$17.95 to \$35.00 marshall's low price

Men's 1099 to 1999 Women's 899 to 1099

save 40% to 70% on girls' and teens' famous make sportswear

if perfect \$5.00 to \$10.00 marshall's low price

299

Shirts, short sets and shirt dresses of easy-care and non-iron fabrics. See solids, prints (cotton, animal, stripes). Fancy, simple, dressy, dressy. Slipless and short sleeves. Slip irregulars. Girls' 7 to 14; teens' 6 to 14.

Home of nationally advertised "name brands" arriving daily at low low prices!!!

40% savings on boys' top make first quality cut-off jeans!!!

selling elsewhere at \$25.00 marshall's low price

199

Great for hot summer wear. Better maker's first quality jeans. Solid and fancy of easy-care cotton. You'll want several for camp and play. Boys' sizes 8 to 20.

save 33 1/3% to 55% on famous make bermuda shorts for men!

if perfect \$6 to \$9 marshall's low price

399

Cool, comfortable easy-to-care for permanent press bermuda shorts. All with belt loops and waist adjusters for a fit in many fancy and solid colors. Be early for best selection. Slight irregulars. Sizes 34 to 44.

special purchase of top make first quality 9 x 12 indoor-outdoor broadloom at \$7 to \$17 savings

selling elsewhere at \$25.00 to \$35.00 marshall's low price

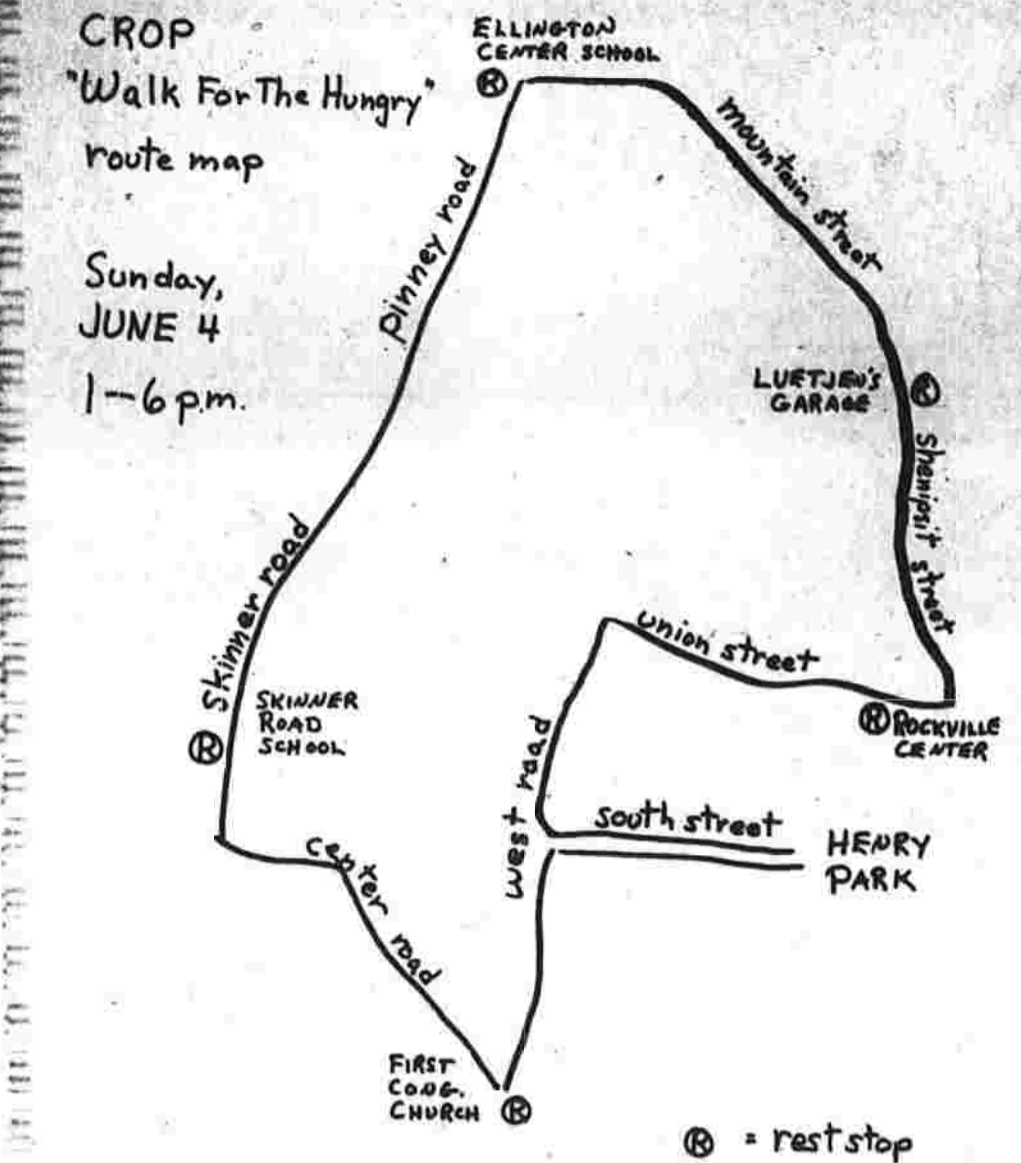
1799

Rugged 100% olefin fiber stands up to years of wear indoors or out, making this "active area" rug a fantastic value. Just great near the pool, on the porch, anywhere in the house. Available in most popular gold color only. Stainproof, too - you can wash it clean with a garden hose. Be sure to come early! All first quality.

open m. thru sat. 9 a.m. to 10 p.m.

410 CRYSTAL ST. 785 PARK AVE. 28 GARFIELD ST. MANCHESTER BLOOMFIELD NEWINGTON





Route of 'Walk for the Hungry'

This map shows the route of the 15-mile GROF "Walk For The Hungry" which will take place in Vernon and Ellington Sunday from 1 to 6 p.m. It will begin at the First Congregational Church in Vernon and end at Henry Park in Rockville. Vernon's Mayor Frank McCoy will take part in the kick-off ceremonies at 1 p.m. The Moose Lodge will serve refreshments at Henry Park for the walkers and entertainment will be provided by the Crimson Horizon, plus Bernie McKenna and Mike Pelletier. Two of the five rest stops along the way will be manned by the Knights of Columbus and the Couple's Club of the Vernon Center Congregational Church. Volunteers are still needed to man the other three stops which will be at Rockville Center, Luetjen's Garage and Ellington Center School. Residents who live along the route of the walk are asked to leave their hoses out if the weather is hot. All money earned by the financially-sponsored walkers will go toward providing relief through the Church World Service Organization.

### Bolton Taxpayers Vote Budget, Board Sets 56 Mill Rate

Bolton taxpayers approved a budget but would have to reject the entire budget if they objected to the 56 mill rate. The town meeting on Tuesday night approved a budget for 1973 that would have set the mill rate at 56. The town meeting also rejected a proposal to increase the mill rate to 57. The town meeting also rejected a proposal to increase the mill rate to 58. The town meeting also rejected a proposal to increase the mill rate to 59. The town meeting also rejected a proposal to increase the mill rate to 60. The town meeting also rejected a proposal to increase the mill rate to 61. The town meeting also rejected a proposal to increase the mill rate to 62. The town meeting also rejected a proposal to increase the mill rate to 63. The town meeting also rejected a proposal to increase the mill rate to 64. The town meeting also rejected a proposal to increase the mill rate to 65. The town meeting also rejected a proposal to increase the mill rate to 66. The town meeting also rejected a proposal to increase the mill rate to 67. The town meeting also rejected a proposal to increase the mill rate to 68. The town meeting also rejected a proposal to increase the mill rate to 69. The town meeting also rejected a proposal to increase the mill rate to 70. The town meeting also rejected a proposal to increase the mill rate to 71. The town meeting also rejected a proposal to increase the mill rate to 72. The town meeting also rejected a proposal to increase the mill rate to 73. The town meeting also rejected a proposal to increase the mill rate to 74. The town meeting also rejected a proposal to increase the mill rate to 75. The town meeting also rejected a proposal to increase the mill rate to 76. The town meeting also rejected a proposal to increase the mill rate to 77. The town meeting also rejected a proposal to increase the mill rate to 78. The town meeting also rejected a proposal to increase the mill rate to 79. The town meeting also rejected a proposal to increase the mill rate to 80. The town meeting also rejected a proposal to increase the mill rate to 81. The town meeting also rejected a proposal to increase the mill rate to 82. The town meeting also rejected a proposal to increase the mill rate to 83. The town meeting also rejected a proposal to increase the mill rate to 84. The town meeting also rejected a proposal to increase the mill rate to 85. The town meeting also rejected a proposal to increase the mill rate to 86. The town meeting also rejected a proposal to increase the mill rate to 87. The town meeting also rejected a proposal to increase the mill rate to 88. The town meeting also rejected a proposal to increase the mill rate to 89. The town meeting also rejected a proposal to increase the mill rate to 90. The town meeting also rejected a proposal to increase the mill rate to 91. The town meeting also rejected a proposal to increase the mill rate to 92. The town meeting also rejected a proposal to increase the mill rate to 93. The town meeting also rejected a proposal to increase the mill rate to 94. The town meeting also rejected a proposal to increase the mill rate to 95. The town meeting also rejected a proposal to increase the mill rate to 96. The town meeting also rejected a proposal to increase the mill rate to 97. The town meeting also rejected a proposal to increase the mill rate to 98. The town meeting also rejected a proposal to increase the mill rate to 99. The town meeting also rejected a proposal to increase the mill rate to 100.



**HEALTH CAPSULES**  
by Michael A. Felt, M.D.  
IF YOU HAVE A HEART ATTACK, SHOULD YOU GIVE UP SMOKING?  
A RECENT STUDY SHOWS THAT THESE WHO DO QUIT HAVE LESS CHANCE OF DYING FROM ANOTHER HEART ATTACK. YOU DECIDE.  
Health Capsules gives helpful information. It is not intended to be a diagnostic or therapeutic.

### Stealing Is, Too

WASHINGTON (AP) — A \$10 bill autographed by President Nixon recently was stolen from the Chevy Chase, Md., residence of U.S. Rep. Manuel Lujan Jr., R-N.M.

Lujan received the bill on March 10, 1971, when he presented the President with the first ticket to the opening game of the Babe Ruth Baseball League World Series held in Albuquerque in August 1971.

### Piping Water Debated

HAMBURG, Germany — West German federal authorities are examining plans to pipe water from Swedish lakes to relieve a shortage of water in the Hamburg and Ruhr industrial areas.

### Bolton Holiday Ceremonies Draw Many Residents

Many Bolton residents turned out for the town's annual Memorial Day observance Monday. As in the past, townspeople lined the parade route along Lynch Rd. and Bolton Center Rd. and then gathered on the green for the short commemorative service. Firemen, ladies' auxiliary members, boy and girl scouts, clubs and brownies and the Center School band were among marchers.

### Coretta King Backs McGovern

OAKLAND, Calif. (AP) — Coretta King, widow of Dr. Martin Luther King Jr., says she is supporting Sen. George McGovern's Democratic presidential bid because it is "unrealistic" to back Rep. Shirley Chisholm, the only black and only woman in the contest.

### Rockville Hospital Notes

Admitted Tuesday: Richard Coville, Park St., Rockville; Ann Orlovski, Wilshire Rd., Vernon; Patricia Spavari, West Hartford; Elizabeth Carey, West Hartford; Winifred Rogers, Bush Cap Rd., Tolland; Cora Newell, Ward St., Rockville; Louis Wnuk, Chestnut St., Rockville; Nicholas Racavari, Ballou Ave., Rockville; Ralph Small, East Main St., Rockville; Frederick Jones, Marlow Rd., Vernon; Raymond Payson, Widdowson Ave., Rockville; Paul Bello, Belmont Ave., Rockville; Martin Schelbel, Aborn Rd., Rockville; Edmund Plourde, Old Farm Rd., Tolland.

### FLEETON GLASS CO.

Over 25 Years of Experience  
Auto-Plate - Window Glass - Mirrors - Glass Furniture Tops - Picture Framing - Fireplace & Door Mirrors - Medicine Cabinets - Special Work  
Manchester 649-4521  
Estimates Gladly Given  
Open Thurs. & Fri. 10:30 P.M. Sat. 11:30 P.M.  
54 McKee St., Manchester (Off Center St.)  
Collector's Items Danish Plates Presidential Decanters Rulme Reproductions  
Platters in Stock 1/2" x 1/2" x 1/2" 10" x 10" x 10" 12" x 12" x 12" 14" x 14" x 14" 16" x 16" x 16" 18" x 18" x 18" 20" x 20" x 20" 22" x 22" x 22" 24" x 24" x 24" 26" x 26" x 26" 28" x 28" x 28" 30" x 30" x 30" 32" x 32" x 32" 34" x 34" x 34" 36" x 36" x 36" 38" x 38" x 38" 40" x 40" x 40" 42" x 42" x 42" 44" x 44" x 44" 46" x 46" x 46" 48" x 48" x 48" 50" x 50" x 50" 52" x 52" x 52" 54" x 54" x 54" 56" x 56" x 56" 58" x 58" x 58" 60" x 60" x 60" 62" x 62" x 62" 64" x 64" x 64" 66" x 66" x 66" 68" x 68" x 68" 70" x 70" x 70" 72" x 72" x 72" 74" x 74" x 74" 76" x 76" x 76" 78" x 78" x 78" 80" x 80" x 80" 82" x 82" x 82" 84" x 84" x 84" 86" x 86" x 86" 88" x 88" x 88" 90" x 90" x 90" 92" x 92" x 92" 94" x 94" x 94" 96" x 96" x 96" 98" x 98" x 98" 100" x 100" x 100"

### See Paris In Indiana

INDIANAPOLIS, Ind. (AP) — An economy-minded tourist might consider a trip to Indiana where a variety of exotic nations could be visited between Lake Michigan and the Ohio River.

### Weathermen Get TV From Four Countries

SALEBRUG, Austria (AP) — Two men on top of a 10,000-foot mountain probably are the luckiest Austrians. But they are also the only Austrians who can choose from seven television channels.



**HIGH IN THE SKY** — Perched atop 10,000 foot Sonnblick Mountain in the Austrian Alps is Europe's oldest meteorological observation point. The life is lonely for the men who man the station, but they are the only Austrians who can choose from seven television channels.

# HERE'S PROOF: THE MILL STORE SAVES YOU MORE...

**STARTS THURS. 9:30 A.M.** You always save when you shop direct from Connecticut's largest manufacturer of sweaters and sportswear. Save on odd lots, mill over-runs and selected irregulars.

**Misses' Name Brand TANK TOPS \$2**  
100 first quality cotton knits in colorful stripe patterns or solid colors. Misses' sizes.

**Misses' Famous Label SHORT SHORTS \$2**  
100 name brand shorts in a large selection of styles in satin, denim and kasha cloth. Many jean style cut-offs included. Sizes 5 to 15.

**Misses' Ban-Ion KNIT TOPS \$2**  
100 easy to wash Ban-Ion in short sleeve ribbed and sleeveless styles. Slight irregulars. Misses' sizes.

**Misses' Famous Label KNIT SLACKS \$2**  
100 name brand pull-on style knit slacks in washable polyester or knit cotton. Many navy blues and purples included. Slight irreg. Sizes 8 to 14.

**Men's Famous Name DRESS SHIRTS \$2**  
100 short sleeve fine quality shirts. New long collar styles. Permanent press polyester and cotton fabric in latest fashion colors. Slight irreg. Men's sizes.

**Men's Famous Label KNIT SHIRTS \$2**  
300 name brand crew neck cotton knit shirts in solid colors and stripe patterns. Selected irregulars of \$7.00 grade. Men's sizes.

# ROOSTER WITH MILLS ROCKVILLE

215 E. MAIN ST. Exit 98 Off Route 15-86  
30 Day Cash Refunds No Deposit Layaway Plan  
OPEN MON. THURS. SAT. 9:30 A.M. TO 5:30 P.M. OPEN WED. THURS. 9:30 A.M. TO 5:30 P.M.  
Master Charge

# MEAT TOWN

1215 1/2 SILVER LANE — EAST HARTFORD  
Hours: Open Tues. & Wed. 10:30 a.m., Thurs. & Fri. 10:00 a.m. to 9:30 p.m., Sat. 10:00 a.m. to 9:00 p.m., Closed Mondays

**RIB ROAST OF BEEF**  
OVEN READY  
**99c**  
10 lb. box At Least 50 lbs.  
Ist thru 5th ribs, Any Size Piece. Ideal for Outdoor Entertaining!

**HAVE YOU TRIED MEAT TOWN PATTIES**  
**\$6.99**  
10 lb. box At Least 50 lbs.  
\*We've Sold 1,000s of Pounds for the Memorial Day Weekend!

**FRESH, WAYBEST CHICKEN LEGS**  
**37c**  
lb.  
These Are Not Quartered!  
**FOR YOUR FREEZER**  
Stock Up At These Prices. As the Market is Definitely On The Way Up!

**Whole Sirloin Tips**  
**\$1.13**  
lb.  
15 to 15 1/2 lb. Average. We'll Cut Into Boneless Sirloin Steaks and Roasts, or Any Way You Desire...

**BOTTOM ROUND**  
**\$1.50**  
lb.  
Includes Full Eye of the Round!  
20 to 20 1/2 lb. Average. We'll cut into Cube or Sandwich Steaks, Eye of Round, Roast Ground, or Any Way you desire. All these items are excellent for the barbecue!

**WE SELL 60c CONN. LOTTERY TICKETS!**  
**We Accept Federal Food Stamps!**  
SPECIALS FOR THURS., FRI. AND SAT.  
WE RESERVE THE RIGHT TO LIMIT QUANTITIES

**World's Most Complete Hi-Fi & Electronics Center**  
**LAFAYETTE RADIO ELECTRONICS**  
**Sale!**  
Sale Prices Expire Saturday, June 3

**Lafayette Solid-State 3-Piece Modular Stereo Hi-Fi Phono System**  
**49.95**  
Features famous BSR 4-Speed Automatic "Mini-Changer" with Diamond LP Needle, 10-Watt Solid-State Stereo Amplifier, Two 4" Side-Loading Acoustically Matched Speaker Systems, and Simulated Black Leather Base with Walnut Vinyl Trim. (24-0223870)

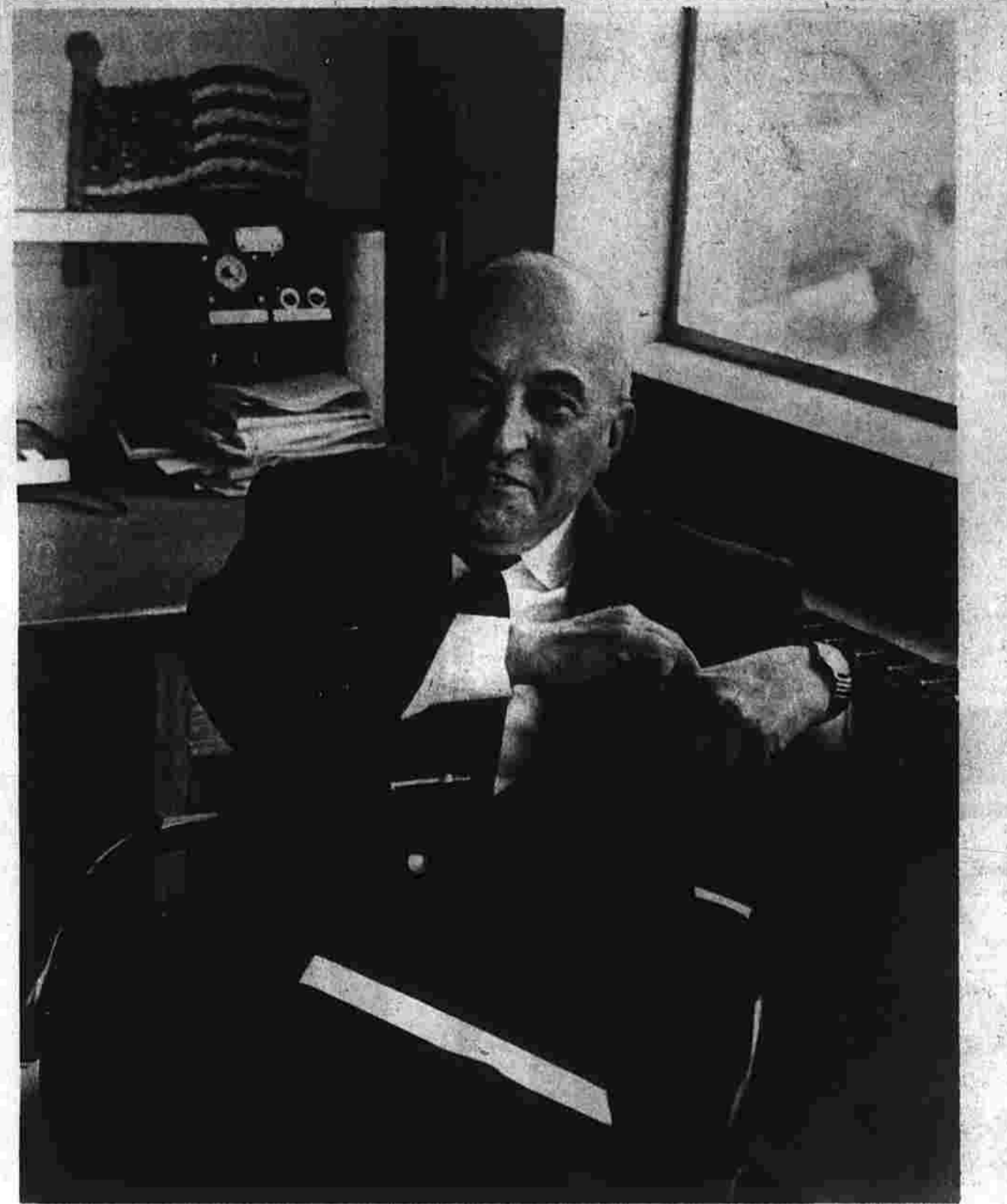
**Tune Your Car Up Before Vacation Time...**  
**3 1/2" Dwell Tachometer**  
**Save Over 3.00**  
**Sale! 13.88**  
Reg. 16.95  
Tune up electronically any car ever made. 3 1/2" Double-Jeweled Diamond Meter. Complete with Instruction Manual. (11-01950)

**Lafayette Battery/AC Cassette Recorder**  
**Save \$5**  
**Sale! 19.95**  
Reg. 24.95  
This simple to operate cassette recorder features Single Tape Function Control and Record Safety Locking Button. Complete with Remote Control. Mike and AC Line Cord. (96-18624-1)

**Lafayette Automatic 24 Hour Timer**  
**Save Over \$1**  
**Sale! 6.88**  
Reg. 7.95  
Helps prevent burglarized Turns Lights as well as Appliances and Overstays automatically when you're not at home. (73-91487)

**Advocate Crolyn Cassettes**  
Increases high frequency level up to 8db, reduces tape hiss, and provides an exciting experience in high fidelity listening.  
**C-60 60-Minute Cassette (28-47052)**  
**Sale! 2.40**  
Each  
2.25 Each with purchase of 6 or more

**LAFAYETTE BATTERIES**  
For radios, flashlights, toys, etc. Stock up now at these money-saving prices.  
**350-2254 "D" Battery - reg. 1.00 ea. SALE \$0.60**  
**350-2252 "C" Battery - reg. 1.00 ea. SALE \$0.50**  
**350-2253 "AA" Battery - reg. 1.00 ea. SALE \$0.50**  
**350-2254 "AAA" Battery - reg. 1.00 ea. SALE \$0.50**  
**350-2255 "AAAA" Battery - reg. 1.00 ea. SALE \$0.50**  
**350-2256 "N" Battery - reg. 1.00 ea. SALE \$0.50**  
**350-2257 "9V" Battery - reg. 1.00 ea. SALE \$0.50**  
**350-2258 "6F22" Battery - reg. 1.00 ea. SALE \$0.50**  
**350-2259 "6F7" Battery - reg. 1.00 ea. SALE \$0.50**  
**350-2260 "6F8" Battery - reg. 1.00 ea. SALE \$0.50**  
**350-2261 "6F9" Battery - reg. 1.00 ea. SALE \$0.50**  
**350-2262 "6F10" Battery - reg. 1.00 ea. SALE \$0.50**  
**350-2263 "6F11" Battery - reg. 1.00 ea. SALE \$0.50**  
**350-2264 "6F12" Battery - reg. 1.00 ea. SALE \$0.50**  
**350-2265 "6F13" Battery - reg. 1.00 ea. SALE \$0.50**  
**350-2266 "6F14" Battery - reg. 1.00 ea. SALE \$0.50**  
**350-2267 "6F15" Battery - reg. 1.00 ea. SALE \$0.50**  
**350-2268 "6F16" Battery - reg. 1.00 ea. SALE \$0.50**  
**350-2269 "6F17" Battery - reg. 1.00 ea. SALE \$0.50**  
**350-2270 "6F18" Battery - reg. 1.00 ea. SALE \$0.50**  
**350-2271 "6F19" Battery - reg. 1.00 ea. SALE \$0.50**  
**350-2272 "6F20" Battery - reg. 1.00 ea. SALE \$0.50**  
**350-2273 "6F21" Battery - reg. 1.00 ea. SALE \$0.50**  
**350-2274 "6F22" Battery - reg. 1.00 ea. SALE \$0.50**  
**350-2275 "6F23" Battery - reg. 1.00 ea. SALE \$0.50**  
**350-2276 "6F24" Battery - reg. 1.00 ea. SALE \$0.50**  
**350-2277 "6F25" Battery - reg. 1.00 ea. SALE \$0.50**  
**350-2278 "6F26" Battery - reg. 1.00 ea. SALE \$0.50**  
**350-2279 "6F27" Battery - reg. 1.00 ea. SALE \$0.50**  
**350-2280 "6F28" Battery - reg. 1.00 ea. SALE \$0.50**  
**350-2281 "6F29" Battery - reg. 1.00 ea. SALE \$0.50**  
**350-2282 "6F30" Battery - reg. 1.00 ea. SALE \$0.50**  
**350-2283 "6F31" Battery - reg. 1.00 ea. SALE \$0.50**  
**350-2284 "6F32" Battery - reg. 1.00 ea. SALE \$0.50**  
**350-2285 "6F33" Battery - reg. 1.00 ea. SALE \$0.50**  
**350-2286 "6F34" Battery - reg. 1.00 ea. SALE \$0.50**  
**350-2287 "6F35" Battery - reg. 1.00 ea. SALE \$0.50**  
**350-2288 "6F36" Battery - reg. 1.00 ea. SALE \$0.50**  
**350-2289 "6F37" Battery - reg. 1.00 ea. SALE \$0.50**  
**350-2290 "6F38" Battery - reg. 1.00 ea. SALE \$0.50**  
**350-2291 "6F39" Battery - reg. 1.00 ea. SALE \$0.50**  
**350-2292 "6F40" Battery - reg. 1.00 ea. SALE \$0.50**  
**350-2293 "6F41" Battery - reg. 1.00 ea. SALE \$0.50**  
**350-2294 "6F42" Battery - reg. 1.00 ea. SALE \$0.50**  
**350-2295 "6F43" Battery - reg. 1.00 ea. SALE \$0.50**  
**350-2296 "6F44" Battery - reg. 1.00 ea. SALE \$0.50**  
**350-2297 "6F45" Battery - reg. 1.00 ea. SALE \$0.50**  
**350-2298 "6F46" Battery - reg. 1.00 ea. SALE \$0.50**  
**350-2299 "6F47" Battery - reg. 1.00 ea. SALE \$0.50**  
**350-2300 "6F48" Battery - reg. 1.00 ea. SALE \$0.50**  
**350-2301 "6F49" Battery - reg. 1.00 ea. SALE \$0.50**  
**350-2302 "6F50" Battery - reg. 1.00 ea. SALE \$0.50**  
**350-2303 "6F51" Battery - reg. 1.00 ea. SALE \$0.50**  
**350-2304 "6F52" Battery - reg. 1.00 ea. SALE \$0.50**  
**350-2305 "6F53" Battery - reg. 1.00 ea. SALE \$0.50**  
**350-2306 "6F54" Battery - reg. 1.00 ea. SALE \$0.50**  
**350-2307 "6F55" Battery - reg. 1.00 ea. SALE \$0.50**  
**350-2308 "6F56" Battery - reg. 1.00 ea. SALE \$0.50**  
**350-2309 "6F57" Battery - reg. 1.00 ea. SALE \$0.50**  
**350-2310 "6F58" Battery - reg. 1.00 ea. SALE \$0.50**  
**350-2311 "6F59" Battery - reg. 1.00 ea. SALE \$0.50**  
**350-2312 "6F60" Battery - reg. 1.00 ea. SALE \$0.50**  
**350-2313 "6F61" Battery - reg. 1.00 ea. SALE \$0.50**  
**350-2314 "6F62" Battery - reg. 1.00 ea. SALE \$0.50**  
**350-2315 "6F63" Battery - reg. 1.00 ea. SALE \$0.50**  
**350-2316 "6F64" Battery - reg. 1.00 ea. SALE \$0.50**  
**350-2317 "6F65" Battery - reg. 1.00 ea. SALE \$0.50**  
**350-2318 "6F66" Battery - reg. 1.00 ea. SALE \$0.50**  
**350-2319 "6F67" Battery - reg. 1.00 ea. SALE \$0.50**  
**350-2320 "6F68" Battery - reg. 1.00 ea. SALE \$0.50**  
**350-2321 "6F69" Battery - reg. 1.00 ea. SALE \$0.50**  
**350-2322 "6F70" Battery - reg. 1.00 ea. SALE \$0.50**  
**350-2323 "6F71" Battery - reg. 1.00 ea. SALE \$0.50**  
**350-2324 "6F72" Battery - reg. 1.00 ea. SALE \$0.50**  
**350-2325 "6F73" Battery - reg. 1.00 ea. SALE \$0.50**  
**350-2326 "6F74" Battery - reg. 1.00 ea. SALE \$0.50**  
**350-2327 "6F75" Battery - reg. 1.00 ea. SALE \$0.50**  
**350-2328 "6F76" Battery - reg. 1.00 ea. SALE \$0.50**  
**350-2329 "6F77" Battery - reg. 1.00 ea. SALE \$0.50**  
**350-2330 "6F78" Battery - reg. 1.00 ea. SALE \$0.50**  
**350-2331 "6F79" Battery - reg. 1.00 ea. SALE \$0.50**  
**350-2332 "6F80" Battery - reg. 1.00 ea. SALE \$0.50**  
**350-2333 "6F81" Battery - reg. 1.00 ea. SALE \$0.50**  
**350-2334 "6F82" Battery - reg. 1.00 ea. SALE \$0.50**  
**350-2335 "6F83" Battery - reg. 1.00 ea. SALE \$0.50**  
**350-2336 "6F84" Battery - reg. 1.00 ea. SALE \$0.50**  
**350-2337 "6F85" Battery - reg. 1.00 ea. SALE \$0.50**  
**350-2338 "6F86" Battery - reg. 1.00 ea. SALE \$0.50**  
**350-2339 "6F87" Battery - reg. 1.00 ea. SALE \$0.50**  
**350-2340 "6F88" Battery - reg. 1.00 ea. SALE \$0.50**  
**350-2341 "6F89" Battery - reg. 1.00 ea. SALE \$0.50**  
**350-2342 "6F90" Battery - reg. 1.00 ea. SALE \$0.50**  
**350-2343 "6F91" Battery - reg. 1.00 ea. SALE \$0.50**  
**350-2344 "6F92" Battery - reg. 1.00 ea. SALE \$0.50**  
**350-2345 "6F93" Battery - reg. 1.00 ea. SALE \$0.50**  
**350-2346 "6F94" Battery - reg. 1.00 ea. SALE \$0.50**  
**350-2347 "6F95" Battery - reg. 1.00 ea. SALE \$0.50**  
**350-2348 "6F96" Battery - reg. 1.00 ea. SALE \$0.50**  
**350-2349 "6F97" Battery - reg. 1.00 ea. SALE \$0.50**  
**350-2350 "6F98" Battery - reg. 1.00 ea. SALE \$0.50**  
**350-2351 "6F99" Battery - reg. 1.00 ea. SALE \$0.50**  
**350-2352 "6F100" Battery - reg. 1.00 ea. SALE \$0.50**



Town Fire Chief W. Clifford Mason

# Chief Mason Retires Today

W. Clifford Mason, town fire chief, retires today after 19 years as chief and some 40 years as a fireman. He will be replaced for the balance of the fiscal year by Deputy Chief Ray Thompson, and beginning July 1, by now Deputy Chief John Rivosa.

A dinner in Mason's honor is planned for June 5 at Manchester Country Club. Tickets are available at town firehouses.

A look at Mason's career is a then South Manchester Fire look at the history of the fire department, and local joined Hose Co. 4 as a volunteer.

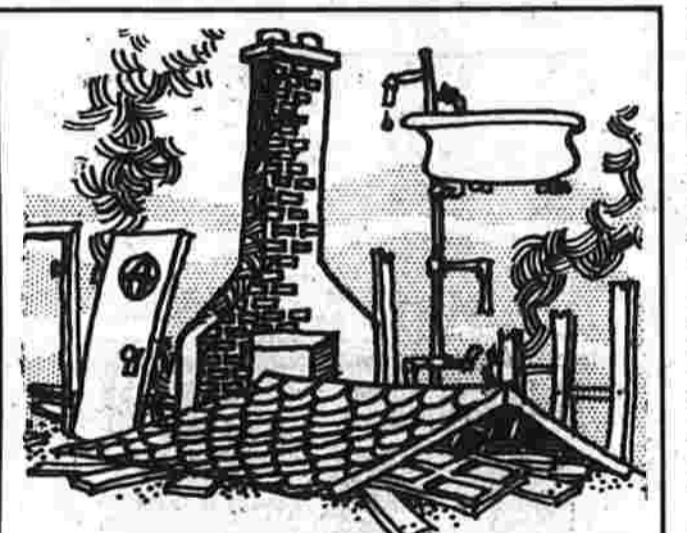
When Mason was appointed chief, the department was directed to the regular force in 1942, because the department's first firemen to about 60 now; master-mechanic leaving his job and from a \$108,000 a year operating budget to a current year budget of about \$1,126,000. When he was appointed chief there are only two men in the department now, Harold Perrett and Ernest Fiol, whom he has not hired.

Mason, a Manchester native, was educated in Manchester schools and graduated from Manchester High School in 1924. He began work then for the town's first fire station, No. 1, by now Deputy Chief John Rivosa.

A dinner in Mason's honor is planned for June 5 at Manchester Country Club. Tickets are available at town firehouses.

A look at Mason's career is a then South Manchester Fire look at the history of the fire department, and local joined Hose Co. 4 as a volunteer.

When Mason was appointed chief, the department was directed to the regular force in 1942, because the department's first firemen to about 60 now; master-mechanic leaving his job and from a \$108,000 a year operating budget to a current year budget of about \$1,126,000. When he was appointed chief there are only two men in the department now, Harold Perrett and Ernest Fiol, whom he has not hired.



# When termites drop in

It's only a question of time - very little time - before other things start dropping in too. Things like your foundation, your floors, your doors, your roof. Termites are sneaky, special little bugs. Unless you're a specialist, they can have their damage done before you know they're there. That's where we come in. We're termite specialists. We can detect and eliminate the nasty little bugs before they can do their work. We can, that is, if you call us in time, and it may be the nick of time right now. Call us today at 649-1390 for a free, no obligation inspection of your property. Call us before things start dropping in on you.

**ABAIR-LAVERY PEST CONTROL CO.**  
125 CENTER STREET, MANCHESTER, CONNECTICUT 06040 • PHONE: 649-1390

# We Will Be OPEN MONDAY THROUGH SATURDAY 8 A.M. - MIDNIGHT SUNDAY 8 a.m. to 5 p.m.

WATCH OUR ADS FOR YOUR EXCITING BONUS SPECIALS BUYS

VALUABLE COUPON

WITH COUPON & 1 FILLED SPECIAL BONUS FOLDER

US #1 MAINE POTATOES 10 LB. BAG 4<sup>95</sup>

VALID MON-SAT MAY 29-JUNE 3 REDEEM AT SUPREME FOODS

VALUABLE COUPON

WITH COUPON & 1 FILLED SPECIAL BONUS FOLDER

SWEET LIFE QUALITY BACON 1 LB VAC PAC 9<sup>95</sup>

VALID MON-SAT MAY 29-JUNE 3 REDEEM AT SUPREME FOODS

S&H BONUS SPECIALS

HURRY on IN and SAVE!

VALUABLE COUPON

WITH COUPON & 1 FILLED SPECIAL BONUS FOLDER

LAND O' LAKES BUTTER 1 LB PKG. 19<sup>95</sup>

VALID MON-SAT MAY 29-JUNE 3 REDEEM AT SUPREME FOODS

S&H BONUS SPECIALS

VALUABLE COUPON

WITH COUPON & 1 FILLED SPECIAL BONUS FOLDER

DOMINO GRANULATED SUGAR 5 LB BAG 5<sup>95</sup>

VALID MON-SAT MAY 29-JUNE 3 REDEEM AT SUPREME FOODS

THE STAMPS ARE A BONUS!

SAM CRISPINO'S SUPREME FOODS

# "We love you, Pathmark..."

...for being open when we need you."

"It's very good that now I can shop 24 hours a day for my night wife and mother that are busy all day. I work from 4 to 12."  
Barbara Damiano

"I shop nights because I have an exceptionally big order to buy, and in the daytime it's just too much. I was very happy that they opened 24 hours around the clock."  
Joan Wernoch

"I think it's fantastic. I work in an office but I don't work in the morning, it's great. I come shopping, and then I can sleep a little later tomorrow."  
Theresa Beale

"It's pretty nice. You miss all the crowds. I don't have to worry about anyone hitting my car out there."  
Laurie Beare

"I had bar till 3 o'clock in the morning and then I came down here and really enjoyed it. I was so happy to see you guys. I was so glad to see you guys. I was so glad to see you guys. I was so glad to see you guys."  
Stephen Wanko

"I'm grateful for this. I work right down the street, and I get off at 12 o'clock. And I can come right here and do my shopping. This way you've got nobody pushing you around."  
Lella Fryer

"I'm on my way home from the movies, and I just thought I'd stop in and do my shopping. This way you've got nobody pushing you around."  
Mrs. J. Crowell

"I think it's a good idea. You have to remember, commuting to this place is also very much easier during the night."  
Jan Lynch

"I work till 12 o'clock, and sometimes when I come home, I can't find any bread or milk, and I can't find any place to get any. So since it's open till 12 o'clock, it's great."  
Betty McLaughlin

# Pathmark Now open 24 hours-a-day... 6 days a week!

the 24 hour store for value

New York, Connecticut and some New Jersey Pathmarks closed Sundays. Please excuse us! During the late hours some departments may be closed. Store hours subject to legal restrictions.

**Polaroid T-108 Color Film \$3.59**

**Pathmark Ice Cream 59¢** (all flavors) **99¢** (all flavors)

**Chickens** U.S. Gov't. Inspected. Whole Frying Fresh Killed. Legs 29¢. Breasts 39¢. Roasting Chickens 29¢.

**Boneless Beef Roasts** (1 Serving per pound). Chuck 99¢. Bottom Round 1.19. Cross Rib 1.19. Top Round 1.19. Top Sirloin 1.19.

**Smoked Hams** Water Added, Fully Cooked, Low Cost Per Serving. 2 Servings per pound. Shank Portion 45¢. Butt Portion 55¢. Shank Half 55¢. Butt Half 65¢. Center Ham Slices 99¢.

**Pathmark of Manchester** Pathmark Shopping Center, 214 Spencer Street, Manchester, Conn.

**Pathmark Soda** 8¢. **Kraft Bar-B-Q Sauce** 39¢. **Hawaiian Punch** 34¢. **Scot Towels** 33¢. **Paper Plates** 99¢.

**Realemon Lemon Juice** 48¢. **C&C Cola Soda** 59¢. **Caruso Blended Oil** 1.19. **Imported Tomatoes** 39¢. **Pathmark Napkins** 33¢. **Martinson Coffee** 79¢. **Wesson Oil** 99¢.

**Pathmark Franks** 1.19. **Franks for Your Holiday Barbecue** 89¢. **Oscar Mayer Franks** 89¢. **All Beef Franks** 79¢. **Swift's Franks** 89¢. **Schickhaus Franks** 89¢. **Ball Park Franks** 89¢. **Pathmark Canned Ham** 3.99.

**Insulated Picnic Jug \$1.29** ea. **Insulated Picnic Bag \$1.29** ea.

**24" Folding Barbeque Grill \$5.99** ea. **Deluxe PVC Vinyl Tubing & Web Chair \$7.99** ea.

**Alka Seltzer 79¢**. **Tek Toothbrush 19¢**. **Contac 89¢**. **Right Guard 88¢**. **Close-Up Toothpaste 67¢**. **Gillette Trac II Razor Set 1.79**.

**Wisk Laundry Detergent 59¢** (1 qt. cont.). **Dial Soap 20¢** (12 ct. box). **Lipton Iced Tea Mix 15¢** (12 ct. jar). **Palmolive Liquid Dish Detergent 57¢** (1 qt. cont.).



Coventry

Development Corporation To Organize

An organizational meeting of the Coventry Development Corporation will be held at the high school cafeteria, Monday at 8 p.m.

The Corporation is being formed under the guidelines of the State Development Commission and is open to all Coventry residents at a subscription price of \$100 per share.

Seven corporate directors are to be elected at the Monday meeting, and any subscriber will be eligible for election to one of these posts.

Also on the agenda will be an announcement by the ad hoc selection committee regarding an option that has been obtained on a 20-acre parcel of land.

Committeemen, including several former members of the Economic Development Commission, will be necessary to insure the success of the Corporation. They hope to raise some \$25,000 from the \$100 per share subscription price.

The group must have 25 incorporators in order to be eligible for state-financed, low interest loans.

Anyone interested in purchasing a subscription should either attend Monday night's session, or contact Attorney Richard Cronin, Attorney David Rappe, Nelson Boers or Leonard Benjamin.

Other members of the organizational committee are Joseph Shanahan, John Drudge, Al Goodin, Hugo Thomas, Frank Perotti, Bert Carlson and James Ladd.

Old Italian Road

Named for Salt Roads — In ancient times salt was highly prized and was brought from great distances when no supply was near. One of the oldest roads of Italy was called the Via Salaria. (Salt Roads) because it was the route over which salt was transported.

Range and Fuel Oil

BANTLY OIL COMPANY, INC. 331 Main Street Tel. 649-3595 Rockville 875-3274



Manganelli Gets Kiwanis Service Award

By official proclamation of the Kiwanis Club of Manchester, Dr. Manganelli was named recipient of the Service Award to a non-Kiwanite. In his response, Dr. Manganelli acknowledged that all the outstanding community service facts in the resolution are part of his life. However, he added, "There are other things to be proud of. One thing is sure. We don't operate in a vacuum. I have a lot of friends who have helped me along the way. I have been good, kind, and grateful. I have always been a friend to my fellow citizens. I have always been a friend to my fellow citizens. I have always been a friend to my fellow citizens." (Herald photo by Pinto)

Coventry

Petition Challenges Democratic Delegates

Petitions bearing the names of 20 enrolled Democrats in the town have been filed with the registrar of voters, challenging the credentials of the three delegates selected to represent the town at the Democratic state convention in Hartford in June.

The three delegates being challenged are Town Chairman Alvah Phillips, Richard Crombie and Richard Hawley. Grounds for the challenge, according to Mrs. Claire Connolly, Town Committeewoman and leader of the challenge movement, are that the delegate selection process violated state party rules, since a woman is not included on the delegation.

At the April Town Committee meeting at which the delegates were chosen, six candidates were nominated, two of whom were women, but neither woman

to serve, with any enrolled Democrat invited to do so. Mrs. Connolly, who is Eastern Connecticut coordinator for the Chisholm for President Committee, said that if she were elected as a challenge delegate she would feel morally obligated to support Shirley Chisholm, the first woman at the convention.

The challenge will go to the convention's credentials committee for review prior to the convention on June 16 and 17.

Pumpkins originated in Mexico and Central America.

WANTED NEWSPAPER CARRIER IN FOUNTAIN VILLAGE APTS. CALL MR. CORDERA Manchester Herald 647-9946

G&H PAVING INC.

Call Us Now for Your Paving Estimates Driveways, Parking Lots, Tennis Courts, Roads RESIDENTIAL & COMMERCIAL WORK TELEPHONE 649-5233

The Omega Speedmaster Professional.



As worn on Earth.

As worn on the Moon.

This is the watch chosen by NASA to be strapped to the wrist of all U.S. Astronauts. The only watch to be flight-qualified for all manned space missions. The watch that's been to the moon as many times as men have been there.

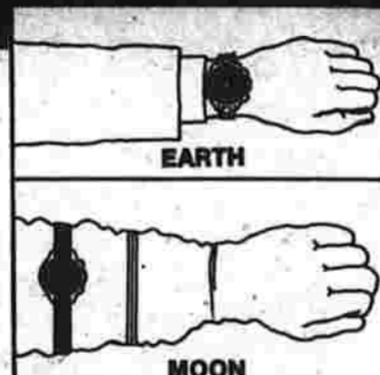
It's also the watch worn by a growing number of professionals on Earth—TV Producers, Sportsmen, Engineers, Military Men—people to whom time is more than just a casual concern.

The only way you can tell an Astronaut's Speedmaster from an Earthman's Speedmaster is by the band. The Astronaut's is larger, to fit around the bulky stevens of his space suit.

Otherwise, it's exactly the same watch, offering just as many advantages to Earthmen as to Spacemen. Because it's built to withstand the force of 15 G's acceleration, your Speedmaster won't go haywire when you swing a tennis racket or throw a football.

Because it can survive violent shaking and vibrations, your Speedmaster will give you the right time even when you're sky-diving, skiing or auto racing.

And because the Speedmaster can tolerate the freezing cold and searing heat of space and the moon, and because it's water-resistant, you can take it anywhere on Earth—from the poles to the equator. The Omega Speedmaster Professional. The watch that lives up to its name.



FOR DAD or GRAD OMEGA Ω

USE YOUR CREDIT

SHOOR Jewelers

YOU CAN BE SURE AT SHOOR'S 917 MAIN STREET—MANCHESTER OPEN THURS. TO 9 P.M.

Voices Concern

Pension Board Upset Over Cut in Budget

The Pension Board, particularly Fred Geyer, its chairman, is concerned and upset over the drastic cut in its requested budget allocation for the 1971-72 fiscal year.

The board members agree, however, that there appears to be no action that can be taken other than to voice concern over the effect of the cut. Geyer brought the matter up at a meeting of the board yesterday afternoon, saying "I think the town is in a bind. The board, the employees, and the unions are in trouble, as a result of the cut."

Qualified in Attitude Geyer said there appears to be a conflict in the attitude of the town directors, particularly Director William Fitzgerald, and the Pension Board in the approach to the town pension fund. The Pension Board wants to keep the fund actuarially sound while the directors seem to feel the pension plan should be operated on a pay-as-you-go basis.

In a pension plan governed by actuarial principles, contributions are made to a fund by both employee and the employer. The money in the fund is then invested and interest on the investments is used to defray the contributions needed to maintain pension pay cuts.

In a pay-as-you-go plan, annual contributions must equal annual pension payments. Geyer maintained that the town's payroll and number of employees will increase faster than the town's ability or willingness to support a pay-as-you-go plan.

The Pension Board originally requested that \$500,000 be put in the fund by the Board of Directors cut this to \$400,000 and the Board of Directors cut this further to \$300,000. In addition to the \$150,000, there will be a \$150,000 in employee contributions to the pension fund this year.

Geyer said the \$500,000 "was not an inflated figure." He added, "We weren't consulted. We weren't invited to a pension hearing. Apparently Director Geyer feels you don't need an authority to run a pension plan."

Geyer agreed with Fitzgerald's remarks on the night the budget was adopted. Fitzgerald said that the cut in the pension allocation would not affect existing pensioners in the coming fiscal year.

Peers Annual Cost Geyer, however, expressed concern over the long-range effect of what has been for the past several years annual cuts in the Pension Board's allocation. Noting that many changes in the pension plan have been approved over the years and many of these changes have cost implications, Geyer said "I think the Pension Board has sooner or later to consider the effect of some of these changes."

Geyer went on, "We pay experts to tell us how to keep the plan sound and you have people like Director Fitzgerald who, with no advice, tell us we need \$150,000."

Geyer and other Pension Board members Herman Pansoni and Atty. Richard Woodhouse agreed that there was little the Pension Board could do about the perennial



BIA Gives Seniors PA System

Jim Gregory (left) and Charles Smith (right) show Wally Fortin, director of the Senior Citizens Center on Myrtle St., the new public address system which

Alma Mater Names Building for Sleith

The new, \$1.7 million science building on the 92-acre Western New England College in Springfield, Mass., has been named William H. Sleith Hall, after a Manchester man, the president of the privately endowed college announced today.

It was so named, said Dr. William H. Sleith of Manchester, the donor, is founder and chairman of the Board of Trustees of the college. Sleith was a member of the college's Board of Trustees since 1958.

Sleith was graduated from the college in 1944 with a Bachelor of Business Administration - Engineering degree. At that time, the college was the Springfield Division of Northeastern University and had only evening classes.

It became Western New England College in 1962 and now has about 2,000 students attending classes in 10 buildings. It is a co-educational school with classes held days and evenings.

In announcing the biggest and the naming of the building, Dr. Herman said, "It is particularly fitting that it is Mr. Sleith who made this bequest, because he is a product of the school and because his career is indicative of the service our school is trying to contribute to the community."



William H. Sleith

Bus Fares Up June 9

The Connecticut Co. will increase its bus fares by five cents per one starting June 9, to charges of evading responsibility and reckless driving, and was fined a total of \$200. Judge company's Hartford division will suspended all terms of 30 days according to notices posted by the and 60 days, to run concurrently.

The fare increases, by, and placed Mmer on probation approved by the State Public Utilities Commission last week, Mmer of evading responsibility and first-degree reckless endangerment (two counts) were nulled by Prosecutor William Collins.

In a companion case, Ronald W. Piranese, 28, of Talcottville Rd., Vernon, pleaded guilty to throwing articles from a motor vehicle, a n d was fined \$200. Charges of reckless endangerment (two counts) against Piranese were nulled.

Scandia Awards 40-Year Pin

Scandia Lodge, Vasa Order of America, held its 72nd Anniversary Banquet Friday, May 26, at Manchester Country Club. At the affair, Miss Rose Davison of 674 Woodbridge St. presented her 40-year membership pin by Gunnar Olson of Bradford, district master and one of the guests for the evening.

Other guests included Miss Lilija Stranaska of Meriden, vice district master; Maurice Anderson of Thomaston, grand lodge secretary.

The Stig Ingre Orchestra from New Britain provided music for dancing.

Court Cases

CONCORD COURT IS

East Hartford resident Gary E. Mimer, 23, of South Rd., Rockville, pleaded guilty to charges of evading responsibility and reckless driving, and was fined a total of \$200. Judge company's Hartford division will suspended all terms of 30 days according to notices posted by the and 60 days, to run concurrently.

Additional charges against Mimer of evading responsibility and first-degree reckless endangerment (two counts) were nulled by Prosecutor William Collins.

In a companion case, Ronald W. Piranese, 28, of Talcottville Rd., Vernon, pleaded guilty to throwing articles from a motor vehicle, a n d was fined \$200. Charges of reckless endangerment (two counts) against Piranese were nulled.

Some Supermarkets Extending Hours

Nighttime supermarket shopping long an institution in many New Jersey and New York cities and towns, appears to be spreading to Connecticut, including Manchester.

Most supermarkets has announced that all Shoprite stores in Connecticut and Massachusetts, including the one on E. Middle Turnpike, will be open until midnight six days a week, starting with today, its hours will be a. m. to midnight, Monday through Saturday, 8 a. m. to 8 p. m., Sunday.

The trend, which is expected to continue in Manchester, began May 13, when Pathmark Stores, which has a supermarket on Spencer St., announced its outlets would stay open 24 hours a day, Monday through Saturday.

Manchester SAVINGS & LOAN Association. Illustration of a family (father, mother, and child) on roller skates. Text: Think of two better reasons why you should own your own home? These are two wonderful reasons to own a home of your own. A home of its own gives a family stability and pride in ownership. Besides, a home of your own is one of the best investments you can make. Drop in to one of our offices tomorrow and see how easy it is to own a home with a Savings & Loan No-Penalty-Open-End mortgage. We've been at this business of home financing longer than anyone else in Manchester and all this experience is available to you. No obligation, either!

CBT THE CONNECTICUT BANK AND TRUST COMPANY. All Manchester Offices open Monday-Friday 9-3, Thursday 9-3, Saturday 10-4-30. Manchester Office: 893 Main Street. Manchester North Main Office: 14 North Main Street. Rockville Office: 354 1/2 West Middle Turnpike. Rockville Office: 42 East Main Street.

Credit-Ability. Big business financing for the small businessman. CBT's Credit-Ability is a new line of business financing similar to that which is used by major corporations. Only it's designed specifically for you — the small to medium sized businessman. There's no top limit to the size of your Credit-Ability line loan. And terms can be tailored to meet your special business needs. CBT's Credit-Ability: The flexible financial plan. With CBT's Credit-Ability there's no need to re-negotiate a new loan every time you need more money. CBT's Credit-Ability: How to put it to work for your business. It's simple. Call the manager at your nearest CBT branch office. He'll give you all the information you need to get you started with Credit-Ability.

Kofsky's SUPER SANDAL SALE! 20% OFF. Ladies & Misses. Sizes — 5-10. Available in White, Brown & Sand Suede Leather. Flat, Med. & Higher Heels. ENTIRE STOCK OF Kofsky's, Kool, Kasual Comfortable Ladies & Misses SANDALS • SAVE! SAVE! SAVE!

### New Students To Be Guests

Rham High School will play host tomorrow to next year's seventh grade incoming students from Hebron, Andover and Marlborough.

### New Vote Set on Rham Budget

The Regional District 8 Board of Education will hold its fourth budget meeting Monday evening at 8 at Rham High School to consider a \$1,608,819 budget for 1973-1974. This is the same budget that was rejected by the voters on May 25.

## States Backing River Cleanup

BOSTON (AP)—A program of the 1960 basin plan was to implement elements of the proposed \$80 million New England River Basin Commission work, when it was agreed each state would contribute \$600 to Vermont Agency of Statewide Planning for the water and land resources of the Connecticut River.

### EVERY FRIDAY 7:30 P.M.

# BINGO

AT KNIGHTS OF COLUMBUS LODGE  
138 MAIN ST. MANCHESTER

Read Herald Advertisements

### Social Security

I'm covered by both parts of Medicare. After a car accident last month, I had some teeth broken and had to go to the hospital for jaw surgery. Will Medicare pay any of this?

### Trigon Players

Jonathan Horton, Thomas Fisher, Henry Osborne, Kathryn Wirth, Colleen Shannon, John Donahue and George Kazany, members of Rham's Trigon Players, will be inducted this evening into Chapter 2762 of the International Thespian Society.

## SUPER Finast

Finast Breakfast Specials!

**Finast Sliced Bacon 79¢**  
For That Savory Flavor

**Colonial Bacon 89¢**  
Canned Bacon 79¢  
Sliced Bacon 79¢  
Sausage 49¢

**Quick Meal Savings!**

**Colonial Sausages 79¢**  
Armour Campfire Franks 69¢  
Oscar Mayer Bologna 69¢

**USDA CHOICE STEAK 89¢ lb**  
Chuck Bone In  
Top Chuck 99¢  
Cube Steaks 1.39

**USDA CHOICE BROIL \$1.19 lb**  
Boneless Shoulder  
Chuck Steak 1.09  
Rib Roast 1.29

**GROUND CHUCK 79¢ 3 lb**  
**GROUND ROUND 99¢ 3 lb**

**WHOLE TURKEYS 49¢ lb**  
Young Hens - 10 to 16 lbs  
Fresh From the Farm to Your Oven

Turkey Braasts 89¢ Turkey Roast 89¢  
Turkey Drumsticks 39¢ Turkey Wings 39¢

**CORNER BEEF BRISKET 85¢**  
**LONG ISLAND DUCKLING 59¢**  
Pork Shoulder 55¢ Boneless Ham 1.49  
Finast Frankfurts 75¢ Lamb Legs 69¢

**NATURAL HEALTH FOOD SHOP**  
AT THE PARKADE

**FUEL OIL 17.9**  
1 Day Heat Fuel Delivery  
MANCHESTER OIL HEAT, INC.  
649-4908

**Mr. Deli Specials!**

**Cod Fillet 89¢**  
Red Salmon Steaks 1.29  
Rainbow Trout 99¢  
Imported Smoked Ham 99¢  
Heat n' Serve Deep Sea Treats 99¢  
Heat n' Serve Haddock Fillet 99¢  
Fried Clams 1.49

**carry home a great night's sleep**

**FEDDERS**  
6,000 BTU'S \$169.95

PORTABLE PLUG-IN  
115-volt  
AIR CONDITIONER  
Draws only 7 1/2 ampere

• Pick it off the shelf  
• Pack it in your car  
• Place it in your window  
• Pull out the Flex-Mount slides  
• Plug it into an adequate pull-out side, an adjustable automatic 115-volt circuit

FEDDERS—World's Largest Selling Air Conditioners

**PEAS 4 for \$1**  
Green Giant  
Save at This Low Price

**GREEN GIANT**  
Kitchen Sliced Green Beans  
Save at This Low Price

**DOLE JUICE DRINK 3 for 89¢**  
Pineapple-Grapefruit  
46 oz cans

**HUDSON Paper Towels 3 for 89¢**  
Decorator  
12 1/2 x 17

**PAMPERS Overnight Diapers 79¢**  
pg. 12

**FREEZER QUEEN**  
Salisbury Steak, Turkey with Gravy, Meat Loaf, Veal Parmesan  
2 for 99¢

**Shoestring Potatoes 5 for 99¢**  
Kraft Veal Parmesan 8 cans 99¢  
Libby Lemonade 12 cans 99¢  
Finast Turnovers All Flavors 12 cans 99¢  
Birds Eye Awake Breakfast 3 1/2 oz 99¢  
Stouffers Macaroni and Cheese 12 pkgs 47¢

**Farm Fresh Dairy!**

**COTTAGE CHEESE 39¢**  
Breakstone California or Small Curd 1 lb pkg

**Mrs. Filbert's Margarine 52¢**  
Soft - Corn Oil  
Chiffon Margarine 1 lb pkg 53¢

**Fresh Fruit and Vegetables from Fussy Finast!**

**POTATOES 20¢ lb**  
U.S. No. 1  
20 lb bag

**Pine Bark MULCH 1.59**  
2 cubic ft  
**Peat Humus 1.29**  
50 lb bag  
**Bedding PLANTS 79¢**  
(Annuals) each

**Seald Sweet - half gallon 79¢**  
**Orange Juice 79¢**

**Fresh Finast Bakery!**

**JUNIOR PIES 6 for \$1**  
Finast All Varieties  
4 oz 2 pkgs

**Finast Bread 3 for \$1**  
Honey, Egg & Butter  
Finast 3 1/2 oz 99¢  
Finast 2 1/2 oz 99¢  
Finast Donut Tray 12 pkgs 55¢

**Health and Beauty Aids!**

**Colgate Toothpaste 73¢**  
1.09 Size 6 3/4 oz tube  
99¢ J&J Medicated Powder 1/2 lb 59¢  
1 1/2 Bright Side Shampoo 6 oz 77¢  
Finast Vitamins Children Chewable 30 99¢  
Finast Aspirin 100 of 100 17¢

### DAC To Launch In-Depth Drug Education Program

The Drug Advisory Council of other committee members, the Manchester Chamber of Commerce, in its continuing effort to bring the drug awareness problem to the younger school children, unanimously approved a three-year drug education program which will be initiated in September in the Manchester schools, at its recent meeting.

### Public Records

Warranty Deeds  
Arthur Petrone to Robert J. and Harriet L. Pasco, property at 675 E. Middle Turnpike, conveyance tax \$28.40.  
James E. and Phyllis W. Davy to the trustees of the E. M. Fiacelli, property at 1215 Cedar St., conveyance tax \$17.40.

### Today in History

To-day in History, May 31, the 162nd day of 1972. There are 214 days left in the year.  
On This Date  
In 1793, the Reign of Terror began in the French Revolution.

### Computer Cuts Wasted Efforts

STORRS, Conn. (AP)—The University of Connecticut says its computers have developed a way to cut wasted effort out of hospital clean-up chores — so much, in fact, that it may be possible to displace 30 per cent of hospital clean-up staffs.

### Court Denies Appeal On 'Family Car' Status

HARTFORD (AP)—A mother whose son wrecked her car while he was driving a "family car" would have had her mother liable for damages caused by the son, the Connecticut Supreme Court ruled today in an insurance case.

### Rec Group Offers Program for Summer

The Recreation Commission is offering a series of summer programs for youngsters and adults in town including basketball, tennis, soccer, and softball.

### Arctic Trip in 330 B.C.

MARSEILLE, France (AP)—A team of scientists from the University of Strasbourg has announced that it has discovered evidence of an ancient Arctic expedition.

### WANTED Clean, Late Model USED CARS

**WANTED**  
Clean, Late Model USED CARS  
Top Prices Paid For All Makes!  
CARTER CHEVROLET CO., INC.  
1229 Main St.  
Phone 646-6464

### Hebron

**30% off** WITH THIS COUPON  
TOWARDS PURCHASE OF ONE 84 OZ PKG  
**TIDE DETERGENT**

**18% off** WITH THIS COUPON  
TOWARDS PURCHASE OF THREE 6 OZ CANS  
**HUNTS TOMATO PASTE**

**20% off** WITH THIS COUPON  
TOWARDS PURCHASE OF ONE 11 OZ JAR  
**CARNATION COFFEE MATE**

**15% off** WITH THIS COUPON  
TOWARDS PURCHASE OF ONE 10 PKG  
**LIPTON POLY BAG ICE TEA MIX**

**20% off** WITH THIS COUPON  
TOWARDS PURCHASE OF TWO 23 OZ PKGS  
**DUNCAN HINES BROWNIE MIX**

**25% off** WITH THIS COUPON  
TOWARDS PURCHASE OF TEN 7 1/2 OZ JARS  
**BEECH-NUT JUNIOR BABY FOOD**

**20% off** WITH THIS COUPON  
TOWARDS PURCHASE OF ONE 50 OZ PKG  
**DISHWASHER ALL**

**AP & A-MARTS**  
PRICES IN THIS AD EFFECTIVE IN ALL A&P'S AND A-MARTS  
IN THIS COMMUNITY AND VICINITY  
(PRICES NOT EFFECTIVE IN A&P AND WAREHOUSES)

**CHICKEN LEGS 48¢**  
WITH THIGHS

**Pork Chops 99¢**  
SUPER RIGHT-SKINNED

**Franks 59¢**  
ALL MEAT

**Sliced Bacon 79¢**  
ALLGOOD

**APPLESAUCE 38¢**  
A&P

**YUNON CLUB SODA 89¢**  
ALL FLAVORS 10 1/2 oz cans

**COOL 'N CREAMY 39¢**  
BIRDS EYE (FROZEN)

**HANDI WHIP 39¢**  
A&P (FROZEN)

**IVORY LIQUID 72¢**  
DETERGENT

**HELLMANN'S 69¢**  
MAYONNAISE

**FRESH EGGS 1.00**  
SUNNYBROOK MEDIUM GRADE 'A'

**FRUIT DRINKS 28¢**  
A&P (EXCEPT ORANGE APPLIC)

**Macaroni & Cheese 20¢**  
OCEAN SPRAY

**Cranapple Juice 59¢**  
INSTANT

**Jell-O Puddings 15¢**  
DISINFECTANT

**Lestoil Cleaner 37¢**  
MARVEL

**Ice Cream 69¢**  
JOHNSON & JOHNSON

**Baby Powder 83¢**  
PLASTIC FOOD WRAP

**Baggies 67¢**  
ALL FLAVORS

**Rice-A-Roni 35¢**  
SAN FRANCISCO TREAT

**Chef Boy-Ar-Dee 1.00**  
SPAGHETTI WITH MEATBALLS

**Glo Coat 87¢**  
FLOOR WAX

**Hamburg Rolls 1.00**  
LAUREL BAKERY

**Heinz Ketchup 79¢**  
BOLD • CHEER • FAB • OXYDOL • TIDE • DRIVE

**Suave Shampoo 79¢**  
FRUIT DRINKS

**RAIN BARREL 79¢**  
FABRIC SOFTENER

**B & M BEANS 33¢**  
BAKED PEA

### Democratic Platform Proposals Under Study

BOSTON (AP) — The Democratic Platform Committee scheduled a hearing on education today, concluding the first of a nationwide series of open sessions on proposed planks for the Democratic Party platform.

Tuesday's day-long session was devoted to testimony from representatives of minority interests and members of the public.

Spokesmen for homosexuals, blacks, women, youth and white ethnic groups appeared before the committee at Boston's historic Faneuil Hall to suggest planks.

Robert Fries, winner of Paul A. Samuelson's "limited employment" prize at the opening of the afternoon session Tuesday, and warned that the Democratic Party "must not settle" for the employment goals of the Nixon Administration.

"The full employment goal of the nation must be reaffirmed by the Democratic platform," said the Massachusetts Institute of Technology economist.

"This means setting for no tolerable level of unemployment."

Fries also joined others testifying before the committee in calling for closing of tax loopholes.

"The first priority with respect to taxation in a Democratic administration must be to close loopholes and reversal of the Nixon Republican emanation of the progressive tax system," he said.

John Kerry of Waltham, a leading spokesman for Vietnam veterans against the war and the candidate for Congress from the state's 5th District, advocated increased benefits for veterans.

He cited a need for a new GI bill to meet rising costs of living and education and told the committee that veterans constitute the "largest single group of unemployed."

Kerry also said the President's trip to Russia while American bombing continued in Indochina represents "the kind of incoherence that has become part and parcel of life in this country."

Although the formal session was on domestic matters, the panel received a variety of proposals for the immediate or early conclusion of the war when it opened up for volunteer witnesses in the afternoon and evening.

Mrs. Elizabeth Boardman of Acton made a special plea for "broad, general and plenary amnesty" for war resisters who have been imprisoned or fled the country.

She said she spoke as the mother of a son who had spent 18 months in prison on charges stemming from opposition to the war and now was serving an additional 18 months on parole.

Amnesty, Mrs. Boardman said, should not be considered "a forgiveness of any kind of sin, but a forgetting, a wiping of the slate clean."

No war resister who felt strongly enough to face exile or prison would ask forgiveness, she said.

The elderly were represented by Victor A. Lindstrom, vice president of the American Association of Retired Persons, and Mrs. Maude Haines, vice president of the Retired Teachers Association.

Both urged a revamping of Social Security benefits.

"No one can live in dignity if he is worried constantly about his pocketbook," Mrs. Haines said.

Homosexual groups also were well represented. A total of five witnesses appeared to speak on their behalf.

Ernest O. Reugh, representing the National Coalition of Gay Organizations, said the statute of Technology economist "mammoth proportions," and 15 million to 20 million Americans are suffering discrimination because of their sexual habits.

Reugh's topic was "the right to be different." Other witnesses spoke on youth participation, women's rights, rights of the poor, children's rights, black Americans, Puerto Rican opportunities and ethnic white Americans.



### East Catholic Schools Treat Handicapped to Picnic

William Mannix of 81 Colony Rd., South Windsor, needs only one good hand as short order cook in yesterday's picnic at East Catholic High School. In the background are some of the 68 Mansfield State Training School children who were senior class guests. Food was donated by area businessmen. Ball games, bicycle and horseback rides, and cartoon movies in the student lounge were part of the all-day event. Mansfield teachers spoke to ECHS students on careers with the handicapped.

### Children Live, In Auto Crash

WETHERSFIELD, Conn. (AP)—A man and his wife from Cromwell were fatally injured and their two children were injured when their car crashed into a stationary piece of construction equipment Tuesday, police said.

Frank and Rachel Christiano were pronounced dead on arrival at Hartford Hospital, according to authorities. Witnesses said it took more than one-half hour to remove the victims from the wreckage of their car.

The two children, Angela, 11, and Thomas, 9, were treated at the hospital and released.

The car was westbound on Prospect Street at 9:30 p.m. when it hit the piece of construction equipment parked at the roadside at Wolcott Hill Road, police said.

### 2 Ounces Per Beat

CHICAGO—On the average, each human heart beats about 72 times a minute and with each beat almost 2 ounces of blood are pumped from the heart.

Watch The 700 CLUB on Channel 18 Mon. thru Fri. 9:00 p.m. - 11 p.m. CHRISTIAN TALK SHOW LIVE

FUEL OIL 17.9 Gal. G.O.D. Min. 500 gals. (24-Hr. Notice for Delivery) 24-Hr. Burner Service Cooperative Oil Co. 315 Broad St., Manchester PHONE 645-1002

### About Town

The name of Timothy J. Grenko of 29 Falkner Dr., who was initiated into Phi Kappa Phi national honor society at Northeastern University, was incorrectly given in Friday's Herald.

father's day, and graduation cards! try us, you'll like us! the miracle of modern printing downtown manchester

### West Point's Lonesome End is Still Lonesome

WEST POINT, N.Y. (AP) — thing four days in a row. You do the same thing next year. The U.S. Military Academy's first "lonesome end" still that you did this year. It's kind doesn't like waiting around for the action. He'd rather be scrambling.

"I don't like to do anything that you have to stand in line to get. I don't like to do anything that you have to stand in line to get. I don't like to do anything that you have to stand in line to get."

Mrs. Elizabeth Boardman of Acton made a special plea for "broad, general and plenary amnesty" for war resisters who have been imprisoned or fled the country.

She said she spoke as the mother of a son who had spent 18 months in prison on charges stemming from opposition to the war and now was serving an additional 18 months on parole.

### Stamps In the News

By BYD KROENKE AP News Editor

Prehistoric animals have always excited and entranced the minds of men whether they be archeologists or philatelists.

Stepping out of the past when they ruled the world millions of years ago, the huge dinosaurs are reproduced in beautiful color on a new set of six stamps by the Republic of Maldives.

Depicted are: cephalopods, dinosaurs, a prehistoric triceratops, pteranodon and tyrannosaurus.

A souvenir sheet containing the pteranodon and the tyrannosaurus (the two highest values) was released for collectors.

At the same time, the Maldives issued another multi-color set of six pictorial national postage stamps of different countries—Scotland, Netherlands, Norway, Hungary, Austria and Spain. No souvenir sheet was released with this set.

To the many collectors who specialize in the stamps of the Queen Elizabeth II reign, the 1972 edition of the Commonwealth Catalogue is a welcome addition. In this leading reference work by Lindquist Publications, many new missing color varieties have been included for Great Britain, the Channel Islands and other Commonwealth countries. First-day covers are also listed and obtained directly from Lindquist Publications, 188 Waverly Pl., New York, N.Y. 10014. The cost is \$6.95, post paid.

Readers who have been inquiring about the latest issues of Israel can still get the Independent Catalogue by returning the "Gates of Jerusalem" at their local stamp dealer. It is available with two new singles—the Tomb of Jethro stamp, showing the olive grove, and the Memorial Day stamp, showing a spray of flowers.

Minus Publications has a Deanna album for Great Britain in two separate volumes, one for singles and another for the complete set. It is available through 1971 for \$19.00. It is also available in individual issues for singles only and tab singles only.

Four new stamps commemorating the centenary of "Telecommunications in the Barbados" have been issued by that island which received full independence from Great Britain in 1966.

The 4-cent stamp illustrates "Transmitting Tone and Now." The 10-cent stamp shows the communication ship Stanley Angwin off the St. Lawrence Coast sending messages from telestat, the communications satellite. The 30-cent adhesive picture illustrates IV launched in 1971. The highest value is a 50-cent stamp which shows the information to other transmitters.

Here's a checklist for upcoming U.S. stamps.

On June 28 the 8-cent commemorative for Wolf Trap Farm with first-day ceremonies at Vienna, Va., 22 July a 6-cent American Revolution Bicentennial block of four at Williamsburg, Va., 23 July the 15-cent honoring McKinley Park, Alaska, 9/28.

On Aug. 17 in Washington, D.C. there will be four Olympic stamps—6 cents for postal cards, 8 cents for surface letters, 11 cents for surface letters and airmail post cards beyond the U.S., Canada and Mexico.

Watch this column for further details and other U.S. issues scheduled for the balance of this year.

Long-Life Laser MOUNTAIN VIEW Calif. (AP)—A sunlight-powered laser that provides the long life required for practical space communications systems has been developed by GTE Syvolda Incorporated. It has been announced.

By means of lenses and mirrors, the new device collects and focuses rays of the sun. The rays stimulate material in the laser to produce voice, data, television and other communications.

Dr. Donald E. Cadden, manager of the company's Electro-Optics Organization, said the limiting factor of space communications' lasers has been relatively short life.

"Present lasers are powered by electric discharges or lamps and are not yet capable of operating the required 6 to 7 years in a communications satellite," he explained. "The sunlight-powered laser promises to provide not only the necessary longevity, but economies of weight and size as well."

JUST FOR YOU...ANOTHER SHOPPING CONVENIENCE FROM SHOP-RITE SUPERMARKETS!

**OPEN 'TIL MIDNIGHT!**

NOW! MONDAY THRU SATURDAY

PLEASE EXCUSE US! During the Late Hours Some Departments May Be Closed!

We've added three full hours to your shopping time so you can meet any last minute emergency—or take care of your entire shopping list—up until midnight, Monday through Saturday. Now, if you're a one-car family, you can shop when hubby's home and the children are in bed. Or, if you're at a movie and suddenly remember there's no milk or bread for breakfast, you can pick it up on your way home. And you don't have to pay premium prices if you must shop after 9 p.m. You'll have Shop-Rite low prices right up to the witching hour! Our cases and shelves will be fully stocked, our employees will be on hand to serve you, and the values will last until midnight. Why pay more? ...or settle for less!

**USDA CHOICE FIRST CUT 49¢ lb.**

**CHUCK STEAK 79¢ lb.**

**GROUND CHUCK 79¢ lb.**

**PORK CHOPS \$1.17 lb.**

**CHUCK POT 85¢ lb.**

**CALIF. ROAST \$1.29 lb.**

**SHOULDER STEAK \$1.29 lb.**

**CHUCK ROAST 99¢ lb.**

**SIRLOIN STEAKS \$1.09 lb.**

**CHICKENS 29¢ lb.**

**CHICKEN PARTS 59¢ WINGS 39¢ BREASTS 69¢**

**PORK ROAST 79¢ lb.**

**TURKEY ROAST \$2.59**

**HAWAIIAN PUNCH 3 \$1.00**

**VIVA NAPKINS 29¢**

**NIBLETS CORN 5 95¢**

**HEINZ KETCHUP 4 1.00**

**APPLE JUICE 4 49¢**

**SCOT TOWELS 29¢**

**AYER CREAMS 69¢**

**LEMONADE 10 99¢**

**CHICKEN 2 1.69**

**CORN 6 59¢**

**PIZZA 2 99¢**

**KRAFT VELVEETA 99¢**

**SHOP-RITE BACON 79¢**

**CHOPPED HAM 69¢**

**Medium Eggs 3 1.00**

**Gem Franks 1 lb. 69¢**

**Shop-Rite Ham 3 lb. \$2.79**

**Turkey Roll 79¢**

**FLAVOR KING ICE CREAM 59¢**

**White Bread 4 99¢**

**English Muffins 4 39¢**

**Fish Cakes 49¢**

**Turbot Fillet 69¢**

**Dressed Smelts 59¢**

**Tasty Shrimp 1.19**

**NESTLE'S INSTANT COFFEE 99¢**

**Nestle's Iced Tea Mix 10¢ OFF**

**25¢ OFF WITH THIS COUPON**

**Tide Detergent**

REDEEM YOUR 587 FEDERAL FOOD STAMPS AT SHOP-RITE

**E. MIDDLE TURNPIKE MANCHESTER**

OPEN MON. - SAT. 9 A.M. - "MIDNIGHT"

**Top Notch DISCOUNT FOODS**

IN EAST HARTFORD: 1150 BURNSIDE AVENUE 801 SILVER LANE

IN MANCHESTER: 260 NORTH MAIN AT MAIN STREET

**EVERYDAY LOW LOW PRICES!**

**LISTERINE Antiseptic Mouthwash**

QUARTS 1.57 The Taste 24 OUNCE 1.35 People Hate... 14 OUNCE .89 Twice A Day

**EXCEDRIN 69¢**

**VITALIS HAIR TONIC 73¢**

**ULTRA BAN 99¢**

**BUFFERIN 1.09**

**CREST TOOTH PASTE 79¢**

**LISTERINE BREATH SPRAY 83¢**

**BROMO SELTZER ANTACID 1.29**

**PRISTINE FEMININE HYGIENE DEODORANT 1.29**

**EFFERDENT DENTURE CLEANSER TABLETS 1.29**

**RIGHT GUARD DEODORANT Natural Scent 5-oz. Spray Can \$1.09**

**ADORN HAIR SPRAY 1.59**

**WHITE RAIN SHAMPOO 99¢**

**SHAMPOO 1.09**

**JOHNSON & JOHNSON BABY SHAMPOO 99¢**

**CLAIROL NICE 'N EASY HAIR COLOR 1.59**

**ALKA SELTZER ANALGESIC In Foli Packs 99¢**

**ONE-A-DAY IRON 100s VITAMINS 99¢**

**GILLETTE FACE SAVER SHAVE BOMB 79¢**

**PRELL SHAMPOO LIQUID 99¢**

**MORE VALUE AT TOP NOTCH ON THESE HEALTH AND BEAUTY AID ITEMS**

# Get Total Value at Grand Union

SAVE CASH AND \$\$\$ STAMPS

**people pleasers**  
SINCE 1872

U.S. GOVT. GRADE 'A'

## Turkey Breast 69¢

SHENANDOAH ALL WHITE MEAT WITH RIB 4-6 LBS. lb.

Ducks U.S. GOVT. GRADE 'A' 59¢  
Pork Loins 89¢  
Pork Loins 99¢

SAVE CASH AND STAMPS

EARLY MORNING

## SLICED BACON 68¢

1-lb. pkg.

Oscar Mayer Wieners 89¢  
Chicken 55¢  
Smoked Butts 99¢  
Fresh Clams 89¢  
Fresh Cod Fillet 89¢  
Sliced Meats 85¢

**Boneless Beef**

## SHOULDER ROAST \$1.09

lb. (CROSS RIB)

**Boneless Beef Steak Sale!**

Shoulder Steak 1.29  
Cube Steak 1.29  
Top Chuck Steaks 1.29  
Shoulder Steak 1.29

Buy the parts you like best!

### Chicken Parts

CHICKEN WINGS 39¢  
CHICKEN LEGS WITH THIGHS 59¢  
CHICKEN BREASTS 69¢  
CHICKEN LIVERS 69¢

LARGE FAMILY PACKS  
3 POUNDS OR MORE

Pork Chops 89¢  
Short Ribs 85¢

DELICATESSEN BUYS  
IN STORES WITH DELI DEPT

Pastrami 99¢  
Hard Salami 89¢

U.S. GOVT. GRADE 'A' 3-5 LBS.

## Turkey Roast 69¢

SWIFT'S PREMIUM BONELESS WHITE AND DARK MEAT lb.

Beef for Stew 99¢  
Sliced Bacon 99¢  
All Beef Franks 95¢

SAVE CASH AND STAMPS

GRAND UNION

## SKINLESS HOT DOGS 68¢

1-lb. pkg.

Canned Hams 3.29  
Sandwich Steak 1.35  
Fried Chicken 1.09  
Smokie Links 89¢  
Beefsteaks 95¢  
Beef & Gravy 1.99

FROM OUR DAIRY CASE

## Sour Cream 39¢

BREAKSTONE 1-lb. can.

Baby Muenster 73¢  
Swiss Slices 1.09

BUTTERMILK OR COUNTRY STYLE

## PILLSBURY BISCUITS 9¢

8-oz. pkg.

Welch's Drink 45¢  
Fleischmann's 49¢  
Mazola 47¢

EARLY GARDEN

## Del Monte Peas 5¢

1-lb. can

## Facial Tissues 6¢

2-PLY 200

## Sunsweet Prune Juice 53¢

1-qt. bot.

## Charmin Bathroom Tissue 4¢

roll

## Granulated Sugar 5¢

5-lb. bag

Reynolds Wrap 1.00  
Rouleau 49¢  
Fruit Cocktail 25¢  
Recipe 99¢  
Lysol Spray 1.39

ScotTissue 14¢  
Salada Tea Bags 89¢  
Miracle Whip 39¢  
Corn 19¢  
Hawaiian Punch 33¢

GRAND UNION HAS THE FRESHEST PRODUCE IN TOWN

## Watermelon 8¢

lb. SWEET RED RIPE

Juice Oranges 10¢  
Romaine Lettuce 19¢  
Honeydews 69¢  
Pineapples 29¢  
Seedless Grapes 59¢  
Tomatoes 1.00  
Florida Limes 29¢

BAKERY FEATURES

## Apple Pie 49¢

8 inch 8-oz. pie

Wheat Bread 1.00  
Angel Food Cake 59¢  
Sweet Rolls 39¢  
English Muffins 45¢

SAVE ON THESE FROZEN FEATURES

## French Fries 9¢

9-oz. pkg.

## Libbyland Dinners 59¢

10-oz. pkg.

Sweet Peas 1.00  
Tasti Puffs 29¢  
Minute Maid 29¢  
Spinach 57¢

Chow Mein 69¢  
Eclairs 89¢  
Jenos Pizza 89¢  
Ice Cream 69¢

HEALTH & BEAUTY AIDS

## Crest Toothpaste 73¢

7-oz. tube REGULAR OR MINT

Aqua Net 45¢  
Breath Spray 69¢  
Pepto-Bismol 79¢  
Vanquish Tablets 55¢

CLIP & REDEEM THESE VALUABLE COUPONS

50 STAMPS NAPKINS 50¢  
50 STAMPS MICRIN MOUTHWASH 50¢  
50 STAMPS CRISCO OIL 50¢  
50 STAMPS SECRET ANTI-PERSPIRANT 50¢  
30 OFF ALL DETERGENT 30¢  
22 OFF PALMOLIVE LIQUID 22¢  
20 OFF MR. CLEAN LIQUID CLEANER 20¢  
15 OFF DOWNY FABRIC SOFTENER 15¢  
10 OFF CHARMIN WHITE OR ASSTD. BATHROOM TISSUE 10¢  
10 OFF COLD WATER ALL 10¢  
50 STAMPS GLADE AIR REFRESHNER 50¢  
50 STAMPS FDS 50¢

# WEEK-END WINNERS

Coupon \$1.09  
For 1-lb. Jar MAXWELL HOUSE COFFEE  
With coupon and \$5. purchase Effective thru Sat., June 3 Limit 1 Coupon Per Family EVERYBODY'S CLIP & SAVE 44¢

Genuine American-Tender Pink Meated

## LEG O' LAMB 85¢

Half Lamb Leg lb. 89¢

Prices effective thru Sat., June 3

MR. BOSTON FISH STICKS or FISH CAKES 2-lb. box 89¢

## LAMB CHOPS 89¢

Best Center Cut SHLD'R 89¢  
Short Cut RIB 1.19  
Lean Meaty LOIN 1.55

LAMB STEW 49¢  
LAMB PATTIES 59¢  
Lean Flavorful Smoked Shoulders 48¢  
Solid Lean Meat-Armour's Corned Beef 99¢  
Armour's "Mira-Cure" Sliced Bacon 79¢

46-oz. Can DEL MONTE JUICE  
PINEAPPLE-ORANGE 25¢  
KINGNUT SOFT MARGARINE 3 16 oz. 1.00

DAIRY BREAKSTONE

## SOUR CREAM 85¢

16 oz. can

'Raid' Home & Garden 1.19  
Panty Hese 37¢

11-oz. Pkg. Banquet DINNERS 37¢  
Cokelet-Turkey-Salisbury

DAIRY BREAKSTONE

## SOUR CREAM 85¢

16 oz. can

11-oz. Pkg. Banquet DINNERS 37¢  
Cokelet-Turkey-Salisbury

PRODUCE

Sugar Sweet Pineapples 29¢

ONIONS 3 lb. 39¢  
ASPARAGUS 2 1/2 lb. Bunch 79¢  
GARDEN HOSE 29.99  
ARTICHOKE HEARTS 29¢

FREE UTILITY BOWL WHEN YOU BUY 1 JUMBO SIZE Dash \$2.05

8 cup capacity • mixing • serving • refrigerator • freezer use  
HURRY! See Our Display

Coupon 34¢  
For 18 Oz. Pkg. BRILLO SOAP PADS  
With coupon and \$5. purchase Effective thru Sat., June 3 Limit 1 Coupon Per Family EVERYBODY'S CLIP & SAVE 7¢

FREE 4-OZ. PKG. MY-T-FINE PUDDING  
With coupon and \$5. purchase Effective thru Sat., June 3 Limit 1 Coupon Per Family EVERYBODY'S

FREE 5-OZ. CAN. ROSELLA TOMATO PASTE  
With coupon and \$5. purchase Effective thru Sat., June 3 Limit 1 Coupon Per Family EVERYBODY'S

Ultra-Ban 5000 ANTI-PERS. 5 oz. can 1.35 Val. 64¢  
Softique BATH BEADS 17 oz. pkg. .98 Val. 68¢  
Men's Hair Spray Score Natural 7 oz. can .99 Val. 58¢



### VALUES GALORE

24 oz. Assorted Flavors Table Talk Pies	.59
Waldorf, White and Assorted Toilet Tissue	4 roll pkg. .33
Rocella Imported Tomatoes	3 85 oz. cans \$1.00
DelMonte Fruit Cocktail	4 17 oz. cans \$1.00

### YOUR SHOPPING COMPANION - OUR EVERYDAY LOW PRICES

Renzoni Spaghetti	2 16-oz. pgs. 47¢
Tomato Paste	6 6-oz. cans 89¢
Hellmann's Mayonnaise	Qt. jar 67¢
Sweet Life Sugar	5-lb. bag 59¢
Maxwell House Coffee	1-lb. can 63¢
Glorox Bleach	Gal. jug 49¢
Duncan Hines Cake Mixes	15-oz. pkg. 36¢
Heinz Tomato Ketchup	14-oz. bottle 24¢
S.O.S. Soap Pads	18 cnt. pkg. 41¢
Ivory Soap	Personal Size 4 bar 26¢
All Laundry Detergent	48-oz. box 79¢
Welch's Grape Jelly	20-oz. jar 37¢
Mott's Applesauce	4 15-oz. jars 63¢
Bounty Towels	123 cnt. roll 36¢
Ivory Liquid Detergent	32-oz. bottle 75¢
Sunsweet Prune Juice	Qt. jar 45¢
Carnation Evap. Milk	14 1/2-oz. can 18¢
Alpo Dog Food	14 1/2-oz. can 27¢
Lipton Tea Bags	100 cnt. pkg. \$1.02
Vermont Maid Syrup	24-oz. bottle 67¢
Taster's Choice	8-oz. jar \$1.85
Diamond Crystal Salt	20-oz. box 10¢
Campbell's Tomato Soup	10 1/2-oz. can 10¢
Birdseye Ope! Whip	Qt. cnt. 53¢
Land O' Lakes Butter	1b. pkg. 81¢
Wesson Oil	24-oz. can 59¢
Hershey's choc. Syrup	18-oz. can 19¢
Tide Laundry Detergent	48-oz. box 79¢
Cranberry Sauce	2 cans 49¢
Kellogg's Corn Flakes	18-oz. box 35¢

**BUGS BUNNY**

Panel 1: "CAN YOU WORK A LITTLE FASTER?"  
Panel 2: "IT'S A MATTER OF LIFE AND DEATH!"  
Panel 3: "TRY IT NOW!"  
Panel 4: "WILL MURIEL GET TO THE HOSPITAL IN TIME TO BRING YOU TOMORROW'S EPISODE OF 'MULPINING THROUGH LIFE'?"

**MICKEY FINN**

Panel 1: "I HEARD YOU SAW YOU OUT THERE IN THE CLUB HOUSE!"  
Panel 2: "I HEARD YOU SAW YOU OUT THERE IN THE CLUB HOUSE!"  
Panel 3: "I HEARD YOU SAW YOU OUT THERE IN THE CLUB HOUSE!"  
Panel 4: "I HEARD YOU SAW YOU OUT THERE IN THE CLUB HOUSE!"

**PRISCILLA'S POP**

Panel 1: "YOU'RE DOING SO WELL! SHOULD I MAKE A BIRTHDAY WISH?"  
Panel 2: "I SUPPOSE!"  
Panel 3: "HEY!! WHAT'S SWAHN?"  
Panel 4: "BUY A WIFE A HAT!"

**GUMMER STREET**

Panel 1: "DID YOU HEAR YOU WERE A TERRIBLE EATING HUGE BUILDINGS AGAIN LAST NIGHT?"  
Panel 2: "YES, ONLY THIS TIME I WAS EATING ENTIRE CITIES!"  
Panel 3: "HOW LONG HAVE YOU HAD THESE DREAMS?"  
Panel 4: "SINCE I STARTED MY DIET!"

**PLAIN JANE**

Panel 1: "SIGH!"  
Panel 2: "SO MUCH FOR NOT SPEAKING TO STRANGE MEN!"

**MR. ABERNATHY**

Panel 1: "BOING!"  
Panel 2: "WHAT WAS THAT?!"  
Panel 3: "THE SIGNAL TO START SERVING DINNER!"

**BUZZ SAWYER**

Panel 1: "DO YOU THINK SOMEBODY IS TRYING TO BLOW YOU INTO SELLING YOUR PLACE, MR. WILLARDSON?"  
Panel 2: "YES, I DO."  
Panel 3: "HAVE YOU REPORTED IT TO THE POLICE?"  
Panel 4: "WHAT DO YOU COME TO MY PLACE, WANT TROUBLE WITH ME AND TRY TO CRACK WHOEVER IT IS?"

**ALLEY OOP**

Panel 1: "YOU KNOW SPREAD THE WORD, COOK (CRAZY GUZZ) OFFER OFFICIALLY OPEN TENDERLOIN!"  
Panel 2: "LET'S TRY TO GET OUT TO 'EM IN HERE ON TV DOUBLE!"  
Panel 3: "ANY DON'T FORGET TO BRING HIS COOKING STUFF!"  
Panel 4: "WHY IF HE DOESN'T WANTA COME?"

**SGT. STRIPES... FOREVER**

Panel 1: "UNC, THE WAY THINGS ARE GOING, WE MAY LOSE THIS ELECTION!"  
Panel 2: "NONSENSE! BRUCE, WHERE ARE SOME OF THE PEOPLE THAT SUPPORTED ME IN THE LAST ELECTION?"  
Panel 3: "...IN PRISON..."

**OUR BOARDING HOUSE with MAJOR HOOPLE**

Panel 1: "HOW ABOUT YOUNG GUY OVER ME, MA, I'VE GOT AN APPOINTMENT DOWNTOWN!"  
Panel 2: "BETTER FOUND THE MAJOR ON THE BACK SO HE CAN CATCH HIS BREATH! HE HAN'T BEEN SO SHORT OF WORDS SINCE HIS WIFE JAKE PAID BACK TO HIM!"  
Panel 3: "WHAT AN ARTIST! GETS THE GLOVE BY STARTING THE MEN LEAVING TO FINISH!"

**OUT OUR WAY BY NED COCHRAN**

Panel 1: "I MERRILY CALLED UP TO ASK IF ANYBODY KNOWS WHERE I CAN FIND THE BOTTLE OF SLURPIN' FILL. WHAT DID YOU COME DOWN FOR?"  
Panel 2: "SOME OF THE SAME! I KNOW WHERE THEY ARE AND YOU GOT REQUESTS TO TAKE A FEW GAZES! JARRIED OUT OF A SECOND GAZET BOYAW! LIKE A TOSKEY, BUT YOUR BELLOW WOULD PUT A BAGAN' BULL! MIDGE TO SHAME!"

**CARNIVAL**

Panel 1: "I LIKE TO GIVE ALL MY SITTERS A GOOD DEAL... FOR A QUARTER I DON'T CAUSE MUCH TROUBLE AND FOR 50¢ I GO TO BED!"

**SHORT RIBS**

Panel 1: "YOU'RE WIFE IS PRETTY GOOD!"  
Panel 2: "YOU'D BETTER BELIEVE IT!"  
Panel 3: "AS A MATTER OF FACT SHE CAN'T EVEN GET THROUGH A HOSPITAL ZONE WITHOUT GETTING ARRESTED!"

**WINTHROP**

Panel 1: "RING! RING! BAM! BAM! BAM!"  
Panel 2: "I'M COMING! I'M COMING! KEEP MEUS CHURT ONLY!"  
Panel 3: "IF YOU'D LET ME HAVE MY OWN KEY, I WOULDN'T HAVE TO KEEP DOING THIS!"

**CAPTAIN EASY**

Panel 1: "AHEAD ON THE LEFT, PAST THOSE TREES, IS A PROVEN NITRACON!"  
Panel 2: "IT LEADS TO A VILLA WHICH IS THROU'S LOCAL OPERATING BASE!"  
Panel 3: "AS BANZAI PARKS OUT OF SIGHT—A MAN LEAVES THE VILLA!"  
Panel 4: "THE VILLA IS DARK! THEY MAY HAVE TAKEN EASY AWAY AGAIN IN THAT STAGE WIN!"

**STEVE CANYON**

Panel 1: "POWER-R!"  
Panel 2: "SAME GUY WHO WOULD GO RIGHT BACK TO SLEEP STANDING IN A COLD!"  
Panel 3: "CAN'T REMEMBER WHETHER THAT RING IS THE TELEPHONE OR THE DOORBELL!"  
Panel 4: "SPECIAL DELIVERY! MAM!"  
Panel 5: "FROM— WOW! I'M AWAKE NOW!"

**LITTLE SPORTS**

Panel 1: "MORNING-IN HIGH CITY!"

**THE FAMILY LAWYER**

**Book Review**

**Temptation for Tois**

Planks and samples. Mud and sawdust. Nooks and crannies. Such are the ingredients that make a house under construction so alluring to young children. But if there is a child, there is danger too. If a child is injured while exploring an unfinished house, the builder is liable.

As Borland and his wife Barbara soon learned, this pooh was a wanderer who kept turning up again and again, like a bad penny, so that is how she got her name.

Penny could be the most lovable dog imaginable when she wanted to—correct, polite, affectionate. But she also could be exasperatingly undependable and an habitual runaway. It once made her the heroine of an American Heritance magazine.

Welsberger, who formerly taught history at the University of Rochester, Columbia, Sta-taken in a stray dog and he and New York University's editor of photographs illustrating the various radi groups that have

**Shows**

**ACROSS**

- 1 Dance
- 2 Visible
- 3 Water vapor
- 4 Down
- 5 High card
- 6 Scotch dish
- 7 Rho
- 8 Make cold
- 9 Persian city
- 10 Perfidious
- 11 Reluctance
- 12 Unattended
- 13 Levels
- 14 Island (Fr.)
- 15 Suffice
- 16 Glossy
- 17 Paper measure
- 18 Evil spirit
- 19 Breeding
- 20 Fourth Latin
- 21 Salsa
- 22 "Blue Eagle" (light bulb)
- 23 Horne's child
- 24 Small child
- 25 The girl
- 26 Roman brooch
- 27 Doves
- 28 Flash flood
- 29 Atmosphere
- 30 21st century (abbr.)
- 31 River island
- 32 Honey maker
- 33 Floor
- 34 Golf mound
- 35 Female
- 36 Sea bird
- 37 German city

**DOWN**

- 1 Orphan
- 2 (Latin)
- 3 Conductor
- 4 Feminine name
- 5 Individual
- 6 Small valleys
- 7 Inflame
- 8 Go by aircraft
- 9 Member
- 10 Jolly like
- 11 11th century
- 12 Atmosphere
- 13 21st century (abbr.)
- 14 Pub drink
- 15 45 Ward
- 16 Girl's name
- 17 Dusk
- 18 Capable
- 19 Solar disk
- 20 12 Capable
- 21 Usual
- 22 Heliobry day
- 23 45 Ward
- 24 45 Ward
- 25 45 Ward
- 26 45 Ward
- 27 45 Ward
- 28 45 Ward
- 29 45 Ward
- 30 45 Ward
- 31 45 Ward
- 32 45 Ward
- 33 45 Ward
- 34 45 Ward
- 35 45 Ward
- 36 45 Ward
- 37 45 Ward

**Life Quiet But Busy For Maestro**

BY MARTIN KEITHRING

Associated Press Writer

LOUISVILLE, Ky. (AP) — The long gravel road leads to just the spot one might expect a musical conductor, artist or anyone who values peace and quiet to live.

Jorge Meister's small, wooden and stone cottage surrounded by acres of rambling farm and woodland is about five miles from downtown Louisville.

A barn and a large house owned by a judge stand nearby. Chickens scurry in the yard.

In one of Meister's rooms sheet music lies on a table and piano. There is a viola propped in the corner which the 31-year-old conductor of the Louisville Orchestra still plays.

Occasionally Meister, a personable, highly respected musician from Mexico City, will take walks through the countryside but much of his day is spent studying and rehearsing.

In addition to the Louisville orchestra Meister is musical adviser for the Kansas City Symphony and is director of the Aspen, Colo., Musical Festival in the summer.

His schedule is hectic. Besides commuting between Louisville and Kansas City during the year, Meister also has a long list of guest appearances and is already well booked for next year.

He has conducted symphonies in Boston, Philadelphia, Chicago, Los Angeles, New York and New Orleans and around the world.

His desire is to "conduct as many orchestras as possible. I want to make as much music as I can."

Meister's love for the Louisville orchestra after 12 years teaching at Juillard in New York was instantaneous.

"I was attracted by the name of the orchestra. It is known extremely well around the world. Its records are often played on European stations. That love has never dimmed although Meister says he won't stay forever.

"We (the orchestra and himself) don't have to discuss," he says. "Things just happen."

**WESTERN BEEF MART**

63 TOLLAND TURNPIKE MANCHESTER

Open Tues, Wed, Sat. 11:00 - Thurs, Fri. 11:00

We Reserve The Right To Limit Quantities

**THURSDAY, FRIDAY, SATURDAY**

**SIRLOIN HIP OF BEEF**

**\$1.09**

lb. avg. weight 25-30 lbs.

with full tenderloin—you get 8-10 sirloin steaks

**SHORT LOIN OF BEEF**

**\$1.29**

lb. avg. weight 25-30 lbs.

you get 8-12 Porterhouse Steaks with full tenderloins

**SIRLOIN TIP ROAST BEEF**

**\$1.19**

lb. avg. weight 14-17 lbs.

you get Sirloin Tip Roast and Boneless Sirloin Steaks or All Steaks if desired.

**WHOLE BOTTOM ROUND With Eye of Round**

**\$1.09**

lb. avg. weight 20-25 lbs.

includes Whole Eye of Round, Rump Roast, Swiss Steaks, Cube Steaks, Ground Round.

**CONNECTICUT STATE LOTTERY**

**How To Tell If You Are A Mighty Oaks Or Little Acorn Semi-Finalist:**

DRAWING DATE	WINNING NUMBER	DRAWING DATE	WINNING NUMBER
2/24/72	XXX27—Mighty Oaks XXX07—Little Acorn	4/13/72	XXX68—Mighty Oaks XXX08—Little Acorn
3/2/72	XXX36—Mighty Oaks XXX06—Little Acorn	4/20/72	XXX86—Mighty Oaks XXX06—Little Acorn
3/9/72	XXX18—Mighty Oaks XXX08—Little Acorn	4/27/72	XXX60—Mighty Oaks XXX00—Little Acorn
3/16/72	XXX96—Mighty Oaks XXX06—Little Acorn	5/4/72	XXX49—Mighty Oaks XXX09—Little Acorn
3/23/72	XXX48—Mighty Oaks XXX08—Little Acorn	5/11/72	XXX43—Mighty Oaks XXX03—Little Acorn
3/30/72	XXX53—Mighty Oaks XXX03—Little Acorn	5/18/72	XXX23—Mighty Oaks XXX03—Little Acorn
4/6/72	XXX88—Mighty Oaks XXX08—Little Acorn		

On June 1st our Quarterly Drawing will be held at Bushnell Park in Hartford. In case of rain it will be at the Hartford State Armory. Time: 10:30 A.M.

One new 4-digit Quarterly number will be drawn for all Mighty Oaks and Little Acorn Semi-finalists. For example: 9876.

**MIGHTY OAKS SEMI-FINALISTS:** Must match the first three digits of the quarterly number. (In example above: 987.) Guaranteed prize: \$400 plus chance to increase it to \$100,000 in the Mighty Oaks Finals, Norwich Rose Arts Festival, June 23rd.

**LITTLE ACORN SEMI-FINALISTS:** Must match all four digits of the Quarterly number. (In example above: 9876.) Guaranteed prize: \$400 plus chance to increase it to \$10,000 in Little Acorn Finals, Norwich Rose Arts Festival, June 23rd. Special consolation prize: If you only match the first three digits (987) you win \$40 and you are not eligible for Little Acorn Finals.

**FREEZER DEPT.**

**HINDS 85¢ | SIDES 75¢**

Connecticut State Lottery

**FISH DEPT.**

Come down and see our new low prices on the following attractively fresh fish: Shad, Genuine Bluefish, Haddock, Filet of Sole, Scallops, Salmon, Halibut, Swordfish, Small & Jumbo Shrimp, Cherrystone & Steamers.

Check All Your Tickets. You Could Be A Winner This Week!





**CLASSIFIED ADVERTISING**  
 CLASSIFIED ADVERTISING DEPT. HOURS  
 8:30 A.M. to 5:00 P.M.  
 COPY CLOSING TIME FOR CLASSIFIED ADVT.  
 4:15 P.M. DAY BEFORE PUBLICATION  
 Deadline for Saturday and Monday is 1:30 p.m. Friday

**YOUR COOPERATION WILL BE APPRECIATED**

**DIAL 643-2711**

Continued From Preceding Page

**THERE OUGHTA BE A LAW**  
**BY SHORTEN AND WHIFFLER**

WHEN THE LYRICS ARE CLEAR, THE ROCK-GROUPS SING 'EM UP - BUT NOT CLEAR.

THEY GAVE THEIR PERFECT DICTION FOR THE "UNDERGROUND" STUFF!

**Apartment - Flats - Tenements** 63  
 TWO-YEAR old duplex, two bedrooms, 2 1/2 baths, central air conditioning, full basement, appliances. Full w.c. Douglass, Realtor, 643-4202.

**Out of Town For Rent** 66  
 ROCKVILLE - 5 rooms, 2 1/2 baths, 2 1/2 car garage, full basement, utilities not included. 7:30-9:30 p.m. 643-2128.

**NEW ON MARKET**  
 Manchester - Parklike setting enhances this beautiful English Tudor of 7 rooms. Lovely enclosed porch, fireplace, plastered walls, wind-up terrace, all bath, interior professionally decorated. Garage with electric eye door. Quiet residential area, yet close to bus, schools, church and shopping. 440. 643-2128.

**CHARLES LESPERANCE** 649-7820

**Houses For Sale** 72  
 MANCHESTER - Immaculate 4 bedroom, 2 1/2 bath, full basement to be appreciated. International Associates, 647-1309.

**PHILBRICK AGENCY**  
 1700 Ten-room Colonial. Former Babcock Tavern with four fireplaces, two full baths, full basement, central air conditioning, beams and much more. Must be seen to be appreciated.

**Out of Town For Sale** 72  
 MANCHESTER - Highland 4 bedroom, 2 1/2 bath, full basement, central air conditioning, full basement, utilities not included. 7:30-9:30 p.m. 643-2128.

**NEW ON MARKET**  
 Manchester - Parklike setting enhances this beautiful English Tudor of 7 rooms. Lovely enclosed porch, fireplace, plastered walls, wind-up terrace, all bath, interior professionally decorated. Garage with electric eye door. Quiet residential area, yet close to bus, schools, church and shopping. 440. 643-2128.

**CHARLES LESPERANCE** 649-7820

**Houses For Sale** 72  
 MANCHESTER - Highland 4 bedroom, 2 1/2 bath, full basement, central air conditioning, full basement, utilities not included. 7:30-9:30 p.m. 643-2128.

**PHILBRICK AGENCY**  
 1700 Ten-room Colonial. Former Babcock Tavern with four fireplaces, two full baths, full basement, central air conditioning, beams and much more. Must be seen to be appreciated.

**Out of Town For Sale** 72  
 MANCHESTER - Highland 4 bedroom, 2 1/2 bath, full basement, central air conditioning, full basement, utilities not included. 7:30-9:30 p.m. 643-2128.

**NEW ON MARKET**  
 Manchester - Parklike setting enhances this beautiful English Tudor of 7 rooms. Lovely enclosed porch, fireplace, plastered walls, wind-up terrace, all bath, interior professionally decorated. Garage with electric eye door. Quiet residential area, yet close to bus, schools, church and shopping. 440. 643-2128.

**CHARLES LESPERANCE** 649-7820

**Manchester Area Youths Arrested After Disturbance**  
 Two Manchester youths and a South Windsor youth were arrested last night by South Windsor police in connection with a disturbance at the Dairy Queen at 900 Sullivan Ave. Police said they were called by the owner of the Dairy Queen and were asked to remove Marc Begin, 19, of 47 Elm St., Manchester, and Jeffrey Chastine, 17, of Village St., both of Rockville. Police said the youths were apprehended in connection with the disturbance at the Dairy Queen. Ernest Fournier, 26 of Grand Ave., Rockville, was arrested yesterday and charged with operating under the influence of a motor vehicle. Police said Begin was "punching" Chastine and Chastine was "punching" Begin. Police said Begin was charged with interfering with an officer and assault, and Chastine was charged with interfering with an officer and assault. South Windsor police are investigating the disturbance. The schools had been closed for the three-day holiday. The disturbance occurred at 11:30 p.m. at the Dairy Queen. The youths were arrested at 9:30 p.m. at the Dairy Queen. The disturbance occurred at 11:30 p.m. at the Dairy Queen. The youths were arrested at 9:30 p.m. at the Dairy Queen.

**Help Wanted - Male or Female** 37  
 EXCELLENT opportunity full-time or part-time, servicing our customers. Apply The Fuller Brush Co., 219 Spruce Street, Manchester, 8:30 a.m. to Monday to Friday.

**BOOKIEKEEPER** - Office manager, 3-5 years industrial background, experienced with experience and background. Apply Pioneer Systems, Hale Rd., Manchester, 8:30 a.m. to Monday to Friday.

**HAIRDRESSERS** - Experienced preferred. Good working conditions. Part or full-time. Apply 777 Main Street, Manchester.

**REAL ESTATE SALES** - Ambitious energetic persons interested in learning the real estate field. Will train. For confidential interview, call Jan Grubank, Village Charm Realty, 643-1600.

**Articles For Sale** 45  
 SPOTS before your eyes, on your new carpet, remove them with Blue Letters Rent electric shampooer. E. E. Johnson Paint Company, 723 Main Street, Manchester, 643-4202.

**CLEANING** carpet cleaner you ever used, so easy to use. Get Blue Luster. Rent electric carpet cleaner. Phone 643-2128.

**Antiques** 56  
 BASKETWEAVE Antiques - Primitive, glassware, china, furniture and bric a brae. Open Saturday and Sunday. 1000 Main St., Manchester, 643-2128.

**THE BIRCHES Antiques** re-locating at Twin Hills Drive, Coventry, C. O. n. H. Hours - 10:30 a.m. - 5:00 p.m. Other times by appointment. 743-6907.

**Wanted - To Buy** 58  
 WANTED - 3 speed transmission to fit 1966 Dodge, 6 cylinders, 480 cc. Call 643-2128.

**WANTED** - antique furniture, glass, pewter, oil paintings or other antique items. Any quantity. Call 643-4202, or 643-2128.

**ANTQUES**, dolls, furniture, antique clothing, jewelry, clocks, glassware, household contents. Phone 643-2128.

**15 LYMAN** auto new canvas cover, 15 h.p. Johnson electric start motor, trailer. Excellent condition. 643-8418.

**ALCOHOL** Starbuck, excellent condition. 643-2128.

**14 LONE STAR** fiberglass, runabout and trailer. Excellent condition. 350. Call 643-4333.

**SKI BI** hydroplane, 30 h.p. Evinrude motor, full controls. 643-2128.

**EVINRUDE** outboard motor, 10-horsepower, 1961. Excellent condition. 643-2128.

**GLASTON**, with 45 h.p. motor and Snowgo till trailer. Excellent condition. 643-2128.

**FURNISHED** room for working lady. Call 643-2128.

**Includes modern gas** heat, hot water and cooking.

**CHARLES PONTICELLI**, 649-9644

**Apartment - Flats - Tenements** 63  
 446 MAIN STREET - First floor, 3-room apartment. Heat, 2 1/2 car garage, full basement. Call 643-2128.

**Apartment - Flats - Tenements** 63  
 DELAUXE 2 bedroom apartment, walk-to bus, complete appliances, 2 air-conditioners, full basement, washer-dryer, hook-up, vanity type bath, glass sliding door onto patio. \$220 per month. Robert D. Murdock, Realtor, 643-2882.

**FURNISHED** 63-A  
 THREE - ROOM furnished apartment, second floor, near street at Center, over bakery. Private entrance. \$125 monthly. Robert D. Murdock, Realtor, 643-2882.

**BOLTON NOTCH** - Two room efficiency for older persons. Newly furnished, bath and shower, private entrance, parking. Phone 643-2882.

**THREE LARGE** rooms, comfortable furnished, first floor. All utilities. Ample parking. Phone 643-2882.

**AVAILABLE** June 1st, 3-room furnished apartment. Rental includes heat and electricity. Call 643-2128.

**THREE-ROOM** furnished apartment, heat, hot water, stove, refrigerator. Apply Marlow's, 87 Main St.

**COZY** 4-room apartment, all utilities, parking, air-conditioning and parking. Walking distance to hospital, on bus line. 643-2882.

**THREE** rooms, all utilities, separate entrance. Heated, parking, 185 monthly, security required. Available immediately. Phone Agency, 643-2128.

**MANCHESTER** - New three-bedroom duplex, 1 1/2 baths, separate basements, 22nd. Full Agency, 643-2128.

**DELUXE** one-bedroom Townhouse, full private basement. Patio. Includes heat, double garage, full kitchen. Call 643-2128.

**IMMEDIATE** occupancy, first floor, 2 1/2 bedrooms, full bathroom, full kitchen, full basement, full parking. Call 643-2128.

**FOUR-ROOM** apartment, first floor, 19 Florence St., 1077. Full Agency, 643-2128.

**MANCHESTER AREA** - 1-room apartment which includes heat, hot water, appliances, laundry, storage, parking, for \$180 monthly. Raymond Ponticelli, 649-9644.

**LOOKING** for anything in real estate rental - apartments, homes, multiple dwellings, no matter how small. Real Estate Associates, Inc. 643-2128.

**MANCHESTER** - New 2-bedroom apartment, heat, hot water, air-conditioner, and appliances included. \$180 monthly. Call 643-2128.

**THE THOMPSON** House - Cottage, centrally located, large, pleasantly furnished with convenient to shopping for overnight and permanent guest rates.

**LARGE** furnished room for male only, parking, 145 weekly. Call 643-2128.

**FURNISHED** room for gentleman, all conveniences, parking. Near bus line. 643-2128.

**MANCHESTER** - Grove Street Apartments, deluxe one - bedroom, full kitchen, full bathroom, full parking. \$150. J.D. Real Estate, 643-2128.

**NEWER** one-bedroom apartment, second floor. Includes heat, appliances and carpeting. \$180 monthly. Paul W. Dugan, Realtor, 643-4202 or 643-1021.

**IMMEDIATE** occupancy - new 3-bedroom duplex, all separate utilities, full basement, disposal, electric heat, 2 air-conditioners, glass sliding door, full kitchen, full bathroom, full parking. \$215 monthly. Security and lease. 643-4202.

**FOUR ROOMS**, first floor, central air conditioning, full kitchen, full bathroom, full parking. \$200 monthly. Paul W. Dugan, Realtor, 643-4202 or 643-1021.

**ELEGANT** five-room apartment, 2000 sq. living room with fireplace, large formal dining room, two bedrooms, includes everything. \$250 monthly. Paul W. Dugan, Realtor, 643-4202 or 643-1021.

**FOUR-ROOM** apartment, full sized kitchen, self-cleaning stove, color refrigerator, full tile bath, garage and laundry facilities, heat and hot water. \$200 monthly. Paul W. Dugan, Realtor, 643-4202 or 643-1021.

**MANCHESTER** - Royal Arms 2-bedroom, two-bath apartment. Fully equipped kitchen, 1 1/2 baths, carpeting, private location, children's playground. \$215. 644-1519. D. J. Henry Co.

**Out of Town For Rent** 66  
 ROCKVILLE - 5 rooms, 2 1/2 baths, 2 1/2 car garage, full basement, utilities not included. 7:30-9:30 p.m. 643-2128.

**NEW ON MARKET**  
 Manchester - Parklike setting enhances this beautiful English Tudor of 7 rooms. Lovely enclosed porch, fireplace, plastered walls, wind-up terrace, all bath, interior professionally decorated. Garage with electric eye door. Quiet residential area, yet close to bus, schools, church and shopping. 440. 643-2128.

**CHARLES LESPERANCE** 649-7820

**WEST SIDE**  
 Gamboli built - 5-room Ranch with full basement, 2 1/2 baths, 2 1/2 car garage, storm and screens, immaculate condition. Selling to family only. \$29,900. 1-7 J. Crockett, Realtor, 643-1577.

**PRIVATE** cottage Cape Cod. Cancellation - magnificent sandy beach, all utilities, available August 2nd. \$140 weekly. Call evenings, 643-0782.

**SUN - FUN**, Lake Wicomico. 2 1/2 bedrooms, 2 1/2 baths, 10-12. Fireplaced, heated, walk to lake. Filling fast. 643-2128.

**COVENTRY LAKE** - Waterview cottage, 100 weekly. Large sandy beach. Phone 743-6169 or 643-2128, 743-9577 after 8 p.m.

**GIANT'S NECK** Highway - 69 Edgewood Road, four-room cottage, sleep 7, a.m. to 6 p.m. 743-8142, 743-8537.

**Wanted To Rent** 68  
 WANTED to rent - Manchester, 2 1/2 bedrooms, 2 1/2 baths, room single or multi-family home. References provided. Phone Agency, 643-2128.

**HOUSES FOR SALE** 72  
 MANCHESTER - 6 1/2 room Colonial, 2 1/2 baths, full basement, furnace, porch, excellent condition. Only \$23,900. Goodchild-Bechtel Realtors, 643-2882, 643-7877, 643-1744.

**MANCHESTER** - Eight room, four bedrooms, four full baths, full basement, full kitchen, full parking. Call 643-2128.

**COMMERCIAL** place for lease or sale, 441 Main St., next to post office. Excellent business location. Call 643-2128.

**PRIME** store location on Hartford Rd. Ideal for gift, fabric, or other retail business. Call 643-2128.

**UNIQUE** U&R Constructed Ranch in suburban area situated on one acre lot. Features best in exclusive living. International Associates, 647-1309.

**MANCHESTER** - Spacious 7 room home, aluminum siding, new roof, first floor family room, double garage. Only \$24,900. Hayes Agency, 646-2121.

**SUMMIT STREET** - Four-bedroom Colonial within walking distance to main schools, 1 1/2 baths, garage, full kitchen, full parking. On bus line convenient to shopping. Good visual location. 1-232-4460.

**PROFESSIONAL** office, four-room, excellent location, full kitchen, full bathroom, full parking. Call 643-2128.

**HOUSES FOR RENT** 65  
 BOLTON NOTCH. Three room winterized cottage, 1-232-4460.

**LARGE** eight - room Colonial, fireplace, large lawn, parking area. Pleasant convenient location. Working adults. 643-2882.

**Out of Town For Rent** 66  
 Manchester-Hebron Area. WELLWOOD VIEW APARTMENTS. 3 1/2 bedrooms, 2 1/2 baths, full kitchen, full parking. On bus line. Country, yet minutes away from the city. Call 643-2128.

**Wholesome** family life in the Country, yet minutes away from the city. Call 643-2128.

**KEITH** Real Estate 646-4122

**MANCHESTER** - 8 room Colonial with 3 1/2 bedrooms, bath, generous kitchen and dining room, 1024 living room. Immaculate condition. \$29,900. Wolverton Agency, Realtors, 643-2882.

**FOUR** family with five rooms possible, 2 1/2 bedrooms, mortgage with second financing available to right party. Call 643-2128.

**NEW** 4 room, 2 1/2 bath, full kitchen, full parking. Call 643-2128.

**MANCHESTER** - New listing, all new kitchen, new Colonial, wall-to-wall carpeting, 2-car garage. Call 643-2128.

**MANCHESTER** - New listing, all new kitchen, new Colonial, wall-to-wall carpeting, 2-car garage. Call 643-2128.

**Houses For Sale** 72  
 MANCHESTER - Highland 4 bedroom, 2 1/2 bath, full basement, central air conditioning, full basement, utilities not included. 7:30-9:30 p.m. 643-2128.

**PHILBRICK AGENCY**  
 1700 Ten-room Colonial. Former Babcock Tavern with four fireplaces, two full baths, full basement, central air conditioning, beams and much more. Must be seen to be appreciated.

**Out of Town For Sale** 72  
 MANCHESTER - Highland 4 bedroom, 2 1/2 bath, full basement, central air conditioning, full basement, utilities not included. 7:30-9:30 p.m. 643-2128.

**NEW ON MARKET**  
 Manchester - Parklike setting enhances this beautiful English Tudor of 7 rooms. Lovely enclosed porch, fireplace, plastered walls, wind-up terrace, all bath, interior professionally decorated. Garage with electric eye door. Quiet residential area, yet close to bus, schools, church and shopping. 440. 643-2128.

**CHARLES LESPERANCE** 649-7820

**WEST SIDE**  
 Gamboli built - 5-room Ranch with full basement, 2 1/2 baths, 2 1/2 car garage, storm and screens, immaculate condition. Selling to family only. \$29,900. 1-7 J. Crockett, Realtor, 643-1577.

**PRIVATE** cottage Cape Cod. Cancellation - magnificent sandy beach, all utilities, available August 2nd. \$140 weekly. Call evenings, 643-0782.

**SUN - FUN**, Lake Wicomico. 2 1/2 bedrooms, 2 1/2 baths, 10-12. Fireplaced, heated, walk to lake. Filling fast. 643-2128.

**COVENTRY LAKE** - Waterview cottage, 100 weekly. Large sandy beach. Phone 743-6169 or 643-2128, 743-9577 after 8 p.m.

**GIANT'S NECK** Highway - 69 Edgewood Road, four-room cottage, sleep 7, a.m. to 6 p.m. 743-8142, 743-8537.

**Wanted To Rent** 68  
 WANTED to rent - Manchester, 2 1/2 bedrooms, 2 1/2 baths, room single or multi-family home. References provided. Phone Agency, 643-2128.

**HOUSES FOR SALE** 72  
 MANCHESTER - 6 1/2 room Colonial, 2 1/2 baths, full basement, furnace, porch, excellent condition. Only \$23,900. Goodchild-Bechtel Realtors, 643-2882, 643-7877, 643-1744.

**MANCHESTER** - Eight room, four bedrooms, four full baths, full basement, full kitchen, full parking. Call 643-2128.

**COMMERCIAL** place for lease or sale, 441 Main St., next to post office. Excellent business location. Call 643-2128.

**PRIME** store location on Hartford Rd. Ideal for gift, fabric, or other retail business. Call 643-2128.

**UNIQUE** U&R Constructed Ranch in suburban area situated on one acre lot. Features best in exclusive living. International Associates, 647-1309.

**MANCHESTER** - Spacious 7 room home, aluminum siding, new roof, first floor family room, double garage. Only \$24,900. Hayes Agency, 646-2121.

**SUMMIT STREET** - Four-bedroom Colonial within walking distance to main schools, 1 1/2 baths, garage, full kitchen, full parking. On bus line convenient to shopping. Good visual location. 1-232-4460.

**PROFESSIONAL** office, four-room, excellent location, full kitchen, full bathroom, full parking. Call 643-2128.

**HOUSES FOR RENT** 65  
 BOLTON NOTCH. Three room winterized cottage, 1-232-4460.

**LARGE** eight - room Colonial, fireplace, large lawn, parking area. Pleasant convenient location. Working adults. 643-2882.

**Out of Town For Rent** 66  
 Manchester-Hebron Area. WELLWOOD VIEW APARTMENTS. 3 1/2 bedrooms, 2 1/2 baths, full kitchen, full parking. On bus line. Country, yet minutes away from the city. Call 643-2128.

**Wholesome** family life in the Country, yet minutes away from the city. Call 643-2128.

**KEITH** Real Estate 646-4122

**MANCHESTER** - 8 room Colonial with 3 1/2 bedrooms, bath, generous kitchen and dining room, 1024 living room. Immaculate condition. \$29,900. Wolverton Agency, Realtors, 643-2882.

**FOUR** family with five rooms possible, 2 1/2 bedrooms, mortgage with second financing available to right party. Call 643-2128.

**NEW** 4 room, 2 1/2 bath, full kitchen, full parking. Call 643-2128.

**MANCHESTER** - New listing, all new kitchen, new Colonial, wall-to-wall carpeting, 2-car garage. Call 643-2128.

**MANCHESTER** - New listing, all new kitchen, new Colonial, wall-to-wall carpeting, 2-car garage. Call 643-2128.

**Manchester Area Youths Arrested After Disturbance**  
 Two Manchester youths and a South Windsor youth were arrested last night by South Windsor police in connection with a disturbance at the Dairy Queen at 900 Sullivan Ave. Police said they were called by the owner of the Dairy Queen and were asked to remove Marc Begin, 19, of 47 Elm St., Manchester, and Jeffrey Chastine, 17, of Village St., both of Rockville. Police said the youths were apprehended in connection with the disturbance at the Dairy Queen. Ernest Fournier, 26 of Grand Ave., Rockville, was arrested yesterday and charged with operating under the influence of a motor vehicle. Police said Begin was "punching" Chastine and Chastine was "punching" Begin. Police said Begin was charged with interfering with an officer and assault, and Chastine was charged with interfering with an officer and assault. South Windsor police are investigating the disturbance. The schools had been closed for the three-day holiday. The disturbance occurred at 11:30 p.m. at the Dairy Queen. The youths were arrested at 9:30 p.m. at the Dairy Queen. The disturbance occurred at 11:30 p.m. at the Dairy Queen. The youths were arrested at 9:30 p.m. at the Dairy Queen.

**Help Wanted - Male or Female** 37  
 EXCELLENT opportunity full-time or part-time, servicing our customers. Apply The Fuller Brush Co., 219 Spruce Street, Manchester, 8:30 a.m. to Monday to Friday.

**BOOKIEKEEPER** - Office manager, 3-5 years industrial background, experienced with experience and background. Apply Pioneer Systems, Hale Rd., Manchester, 8:30 a.m. to Monday to Friday.

**HAIRDRESSERS** - Experienced preferred. Good working conditions. Part or full-time. Apply 777 Main Street, Manchester.

**REAL ESTATE SALES** - Ambitious energetic persons interested in learning the real estate field. Will train. For confidential interview, call Jan Grubank, Village Charm Realty, 643-1600.

**Articles For Sale** 45  
 SPOTS before your eyes, on your new carpet, remove them with Blue Letters Rent electric shampooer. E. E. Johnson Paint Company, 723 Main Street, Manchester, 643-4202.

**CLEANING** carpet cleaner you ever used, so easy to use. Get Blue Luster. Rent electric carpet cleaner. Phone 643-2128.

**Antiques** 56  
 BASKETWEAVE Antiques - Primitive, glassware, china, furniture and bric a brae. Open Saturday and Sunday. 1000 Main St., Manchester, 643-2128.

**THE BIRCHES Antiques** re-locating at Twin Hills Drive, Coventry, C. O. n. H. Hours - 10:30 a.m. - 5:00 p.m. Other times by appointment. 743-6907.

**Wanted - To Buy** 58  
 WANTED - 3 speed transmission to fit 1966 Dodge, 6 cylinders, 480 cc. Call 643-2128.

**WANTED** - antique furniture, glass, pewter, oil paintings or other antique items. Any quantity. Call 643-4202, or 643-2128.

**ANTQUES**, dolls, furniture, antique clothing, jewelry, clocks, glassware, household contents. Phone 643-2128.

**15 LYMAN** auto new canvas cover, 15 h.p. Johnson electric start motor, trailer. Excellent condition. 643-8418.

**ALCOHOL** Starbuck, excellent condition. 643-2128.

**14 LONE STAR** fiberglass, runabout and trailer. Excellent condition. 350. Call 643-4333.

**SKI BI** hydroplane, 30 h.p. Evinrude motor, full controls. 643-2128.

**EVINRUDE** outboard motor, 10-horsepower, 1961. Excellent condition. 643-2128.

**GLASTON**, with 45 h.p. motor and Snowgo till trailer. Excellent condition. 643-2128.

**FURNISHED** room for working lady. Call 643-2128.

**Includes modern gas** heat, hot water and cooking.

**CHARLES PONTICELLI**, 649-9644

**Apartment - Flats - Tenements** 63  
 446 MAIN STREET - First floor, 3-room apartment. Heat, 2 1/2 car garage, full basement. Call 643-2128.

**Apartment - Flats - Tenements** 63  
 DELAUXE 2 bedroom apartment, walk-to bus, complete appliances, 2 air-conditioners, full basement, washer-dryer, hook-up, vanity type bath, glass sliding door onto patio. \$220 per month. Robert D. Murdock, Realtor, 643-2882.

**FURNISHED** 63-A  
 THREE - ROOM furnished apartment, second floor, near street at Center, over bakery. Private entrance. \$125 monthly. Robert D. Murdock, Realtor, 643-2882.

**BOLTON NOTCH** - Two room efficiency for older persons. Newly furnished, bath and shower, private entrance, parking. Phone 643-2882.

**THREE LARGE** rooms, comfortable furnished, first floor. All utilities. Ample parking. Phone 643-2882.

**AVAILABLE** June 1st, 3-room furnished apartment. Rental includes heat and electricity. Call 643-2128.

**THREE-ROOM** furnished apartment, heat, hot water, stove, refrigerator. Apply Marlow's, 87 Main St.

**COZY** 4-room apartment, all utilities, parking, air-conditioning and parking. Walking distance to hospital, on bus line. 643-2882.

**THREE** rooms, all utilities, separate entrance. Heated, parking, 185 monthly, security required. Available immediately. Phone Agency, 643-2128.

**MANCHESTER** - New three-bedroom duplex, 1 1/2 baths, separate basements, 22nd. Full Agency, 643-2128.

**DELUXE** one-bedroom Townhouse, full private basement. Patio. Includes heat, double garage, full kitchen. Call 643-2128.

**IMMEDIATE** occupancy, first floor, 2 1/2 bedrooms, full bathroom, full kitchen, full basement, full parking. Call 643-2128.

**FOUR-ROOM** apartment, first floor, 19 Florence St., 1077. Full Agency, 643-2128.

**MANCHESTER AREA** - 1-room apartment which includes heat, hot water, appliances, laundry, storage, parking, for \$180 monthly. Raymond Ponticelli, 649-9644.

**LOOKING** for anything in real estate rental - apartments, homes, multiple dwellings, no matter how small. Real Estate Associates, Inc. 643-2128.

**MANCHESTER** - New 2-bedroom apartment, heat, hot water, air-conditioner, and appliances included. \$180 monthly. Call 643-2128.

**THE THOMPSON** House - Cottage, centrally located, large, pleasantly furnished with convenient to shopping for overnight and permanent guest rates.

**LARGE** furnished room for male only, parking, 145 weekly. Call 643-2128.

**FURNISHED** room for gentleman, all conveniences, parking. Near bus line. 643-2128.

**MANCHESTER** - Grove Street Apartments, deluxe one - bedroom, full kitchen, full bathroom, full parking. \$150. J.D. Real Estate, 643-2128.

**NEWER** one-bedroom apartment, second floor. Includes heat, appliances and carpeting. \$180 monthly. Paul W. Dugan, Realtor, 643-4202 or 643-1021.

**IMMEDIATE** occupancy - new 3-bedroom duplex, all separate utilities, full basement, disposal, electric heat, 2 air-conditioners, glass sliding door, full kitchen, full bathroom, full parking. \$215 monthly. Security and lease. 643-4202.

**FOUR ROOMS**, first floor, central air conditioning, full kitchen, full bathroom, full parking. \$200 monthly. Paul W. Dugan, Realtor, 643-4202 or 643-1021.

**ELEGANT** five-room apartment, 2000 sq. living room with fireplace, large formal dining room, two bedrooms, includes everything. \$250 monthly. Paul W. Dugan, Realtor, 643-4202 or 643-1021.

**FOUR-ROOM** apartment, full sized kitchen, self-cleaning stove, color refrigerator, full tile bath, garage and laundry facilities, heat and hot water. \$200 monthly. Paul W. Dugan, Realtor, 643-4202 or 643-1021.

**MANCHESTER** - Royal Arms 2-bedroom, two-bath apartment. Fully equipped kitchen, 1 1/2 baths, carpeting, private location, children's playground. \$215. 644-1519. D. J. Henry Co.

**Out of Town For Rent** 66  
 ROCKVILLE - 5 rooms, 2 1/2 baths, 2 1/2 car garage, full basement, utilities not included. 7:30-9:30 p.m. 643-2128.

**NEW ON MARKET**  
 Manchester - Parklike setting enhances this beautiful English Tudor of 7 rooms. Lovely enclosed porch, fireplace, plastered walls, wind-up terrace, all bath, interior professionally decorated. Garage with electric eye door. Quiet residential area, yet close to bus, schools, church and shopping. 440. 643-2128.

**CHARLES LESPERANCE** 649-7820

**WEST SIDE**  
 Gamboli built - 5-room Ranch with full basement, 2 1/2 baths, 2 1/2 car garage, storm and screens, immaculate condition. Selling to family only. \$29,900. 1-7 J. Crockett, Realtor, 643-1577.

**PRIVATE** cottage Cape Cod. Cancellation - magnificent sandy beach, all utilities, available August 2nd. \$140 weekly. Call evenings, 643-0782.

**SUN - FUN**, Lake Wicomico. 2 1/2 bedrooms, 2 1/2 baths, 10-12. Fireplaced, heated, walk to lake. Filling fast. 643-2128.

**COVENTRY LAKE** - Waterview cottage, 100 weekly. Large sandy beach. Phone 743-6169 or 643-2128, 743-9577 after 8 p.m.

**GIANT'S NECK** Highway - 69 Edgewood Road, four-room cottage, sleep 7, a.m. to 6 p.m. 743-8142, 743-8537.

**Wanted To Rent** 68  
 WANTED to rent - Manchester, 2 1/2 bedrooms, 2 1/2 baths, room single or multi-family home. References provided. Phone Agency, 643-2128.

**HOUSES FOR SALE** 72  
 MANCHESTER - 6 1/2 room Colonial, 2 1/2 baths, full basement, furnace, porch, excellent condition. Only \$23,900. Goodchild-Bechtel Realtors, 643-2882, 643-7877, 643-1744.

**MANCHESTER** - Eight room, four bedrooms, four full baths, full basement, full kitchen, full parking. Call 643-2128.

**COMMERCIAL** place for lease or sale, 441 Main St., next to post office. Excellent business location. Call 643-2128.

**PRIME** store location on Hartford Rd. Ideal for gift, fabric, or other retail business. Call 643-2128.

**UNIQUE** U&R Constructed Ranch in suburban area situated on one acre lot. Features best in exclusive living. International Associates, 647-1309.

**MANCHESTER** - Spacious 7 room home, aluminum siding, new roof, first floor family room, double garage. Only \$24,900. Hayes Agency, 646-2121.

**SUMMIT STREET** - Four-bedroom Colonial within walking distance to main schools, 1 1/2 baths, garage, full kitchen, full parking. On bus line convenient to shopping. Good visual location. 1-232-4460.

**PROFESSIONAL** office, four-room, excellent location, full kitchen, full bathroom, full parking. Call 643-2128.

**HOUSES FOR RENT** 65  
 BOLTON NOTCH. Three room winterized cottage, 1-232-4460.

**LARGE** eight - room Colonial, fireplace, large lawn, parking area. Pleasant convenient location. Working adults. 643-2882.

**Out of Town For Rent** 66  
 Manchester-Hebron Area. WELLWOOD VIEW APARTMENTS. 3 1/2 bedrooms, 2 1/2 baths, full kitchen, full parking. On bus line. Country, yet minutes away from the city. Call 643-2128.

**Wholesome** family life in the Country, yet minutes away from the city. Call 643-2128.

**KEITH** Real Estate 646-4122

**MANCHESTER** - 8 room Colonial with 3 1/2 bedrooms, bath, generous kitchen and dining room, 1024 living room. Immaculate condition. \$29,900. Wolverton Agency, Realtors, 643-2882.

**FOUR** family with five rooms possible, 2 1/2 bedrooms, mortgage with second financing available to right party. Call 643-2128.

**NEW** 4 room, 2 1/2 bath, full kitchen, full parking. Call 643-2128.

**MANCHESTER** - New listing, all new kitchen, new Colonial, wall-to-wall carpeting, 2-car garage. Call 643-2128.

**MANCHESTER** - New listing, all new kitchen, new Colonial, wall-to-wall carpeting, 2-car garage. Call 643-2128.

**Houses For Sale** 72  
 MANCHESTER - Highland 4 bedroom, 2 1/2 bath, full basement, central air conditioning, full basement, utilities not included. 7:30-9:30 p.m. 643-2128.

**PHILBRICK AGENCY**  
 1700 Ten-room Colonial. Former Babcock Tavern with four fireplaces, two full baths, full basement, central air conditioning, beams and much more. Must be seen to be appreciated.

**Out of Town For Sale** 72  
 MANCHESTER - Highland 4 bedroom, 2 1/2 bath, full basement, central air conditioning, full basement, utilities not included. 7:30-9:30 p.m. 643-2128.

**NEW ON MARKET**  
 Manchester - Parklike setting enhances this beautiful English Tudor of 7 rooms. Lovely enclosed porch, fireplace, plastered walls, wind-up terrace, all bath, interior professionally decorated. Garage with electric eye door. Quiet residential area, yet close to bus, schools, church and shopping. 440. 643-2128.

**CHARLES LESPERANCE** 649-7820

**WEST SIDE**  
 Gamboli built - 5-room Ranch with full basement, 2 1/2 baths, 2 1/2 car garage, storm and screens, immaculate condition. Selling to family only. \$29,900. 1-7 J. Crockett, Realtor, 643-1577.

**PRIVATE** cottage Cape Cod. Cancellation - magnificent sandy beach, all utilities, available August 2nd. \$140 weekly. Call evenings, 643-0782.

**SUN - FUN**, Lake Wicomico. 2 1/2 bedrooms, 2 1/2 baths, 10-12. Fireplaced, heated, walk to lake. Filling fast. 643-2128.

**COVENTRY LAKE** - Waterview cottage,